

LB/DON/108/03

13

# OPTIMUM DESIGN OF STEEL OPEN WEB GIRDERS

THIS THESIS IS SUBMITTED TO THE DEPARTMENT OF CIVIL  
ENGINEERING IN PARTIAL FULFILMENT OF THE REQUIREMENT FOR  
THE DEGREE OF MASTER OF ENGINEERING IN STRUCTURAL  
ENGINEERING DESIGN

By

C D W ALAHAKOON



University of Moratuwa, Sri Lanka  
Electronic Theses & Dissertations  
www.lib.mrt.ac.lk

Supervised By

Dr. M.T.P. Hettiarachchi

Senior Lecturer

Department of Civil Engineering

621/017  
621/017

DEPARTMENT OF CIVIL ENGINEERING  
UNIVERSITY OF MORATUWA  
SRI LANKA

University of Moratuwa



79288

OCTOBER 2003

79288

UM Thesis

79288

# **OPTIMUM DESIGN OF STEEL OPEN WEB GIRDERS**

**By Eng. C. D. W. ALAHAKOON**

This thesis is submitted to the Department of Civil Engineering of the University of Moratuwa in partial fulfilment of the requirements for the Degree of M.Eng. in Structural Engineering Design.



Electronic Theses & Dissertations  
[www.lib.mrt.ac.lk](http://www.lib.mrt.ac.lk)

Department of Civil Engineering,  
University of Moratuwa,  
Sri Lanka.  
October 2003.

## ACKNOWLEDGEMENT

I am grateful to the Vice Chancellor, Dean of the Faculty of Engineering and Head of the Department of Civil Engineering of University of Moratuwa for the permission granted for this research work. The coordinator of the postgraduate research, Dr. M.T.P. Hettiarachchi always kept me alive encouraging the completion of this research work. I wish to thank all the lecturers of the postgraduate course on Structural Engineering Design, who helped me in many ways to make this study successful. Also the knowledge gained during the lecture series was an immense help for my career.

I am especially grateful to the supervisor of the project, Dr. Mrs. M.T.P. Hettiarachchi for her dedication and commitment right through the research work.

Also I wish to thank the Department of Buildings for sponsorship, Director of Buildings and Deputy Director (Engineering Services) who granted me duty leave for post graduate diploma course and allowed me to make use of Departmental data for my project work.

I thank the librarian and the staff of the library for the co-operation extended to me for this research work.

There are many who helped this work in various ways. I regret the inability to thank them all individually. So a big thank for all those who helped to make this research project success.



Finally, I wish to thank my family members for their wholehearted support extended during this research project.

C D W Alahakoon  
01 05 2003



## TABLE OF CONTENTS

	<b>Page</b>
1 INTRODUCTION	
1.1 General	1
1.2 Objective	2
1.3 Methodology	2
2 AVAILABLE DATA	
2.1 Open web girder data used for pitched roofs	3
2.2 Available literature	4
3 ANALYSIS	
3.1 Type of open web girder considered for analysis	5
3.2 Loading	6
3.3 Analysis of the girder	15
4 DESIGN AND COSTING	
4.1 Girder design	17
4.2 Costing	24
4.3 Spreadsheet for girder design and costing	25
5 RESULTS AND CONCLUSIONS	
5.1 Results	27
5.2 Results of the alternative computer modeling methods	40
5.3 Limitations	41
5.4 Conclusions	56
5.5 References	58



University of Moratuwa, Sri Lanka  
Electronic Theses & Dissertations  
[www.lib.mrt.ac.lk](http://www.lib.mrt.ac.lk)



## ANNEXES

- Annexe 1 Open web truss details
- Annexe 2 Wind zone map of Sri Lanka
- Annexe 3 Maximum actions on the members of the girder
- Annexe 4 Flow chart for the design and costing of the girder
- Annexe 5 Sectional properties of the angle sections
- Annexe 6 Typical spreadsheet print out
- Annexe 7 Prokon graphical representation for 18<sup>0</sup> pitched roof
- Annexe 8 Comparison of Microfeap and Prokon actions
- Annexe 9 Horizontal displacements at roller supports when one support is pinned and other is on rollers
- Annexe 10 Variation of top and bottom chords actions when both supports are pinned
- Annexe 11 Reactions at supports when both supports are pinned
- Annexe 12 Variation of optimum member actions in optimum trusses for different modeling methods
- Annexe 13 Sketches drawn to scale



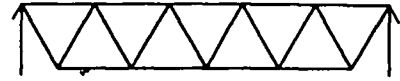
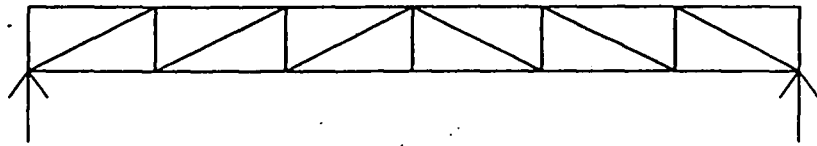
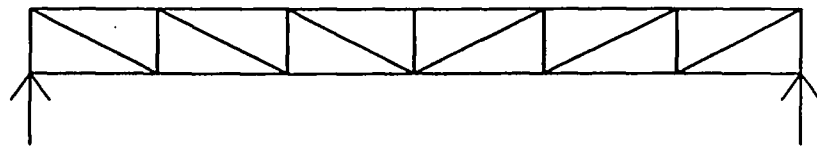
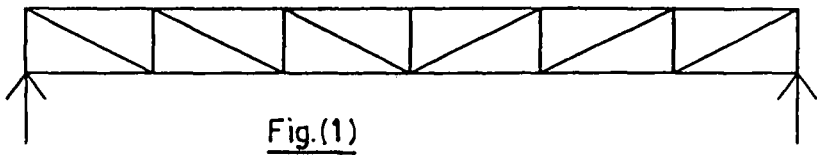
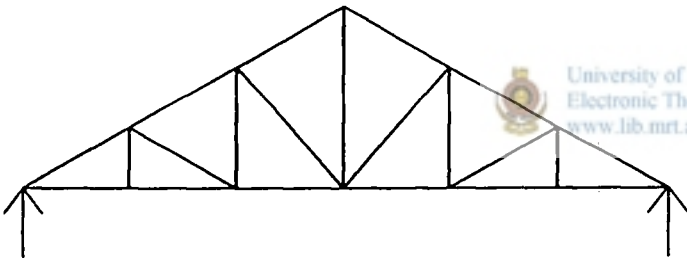
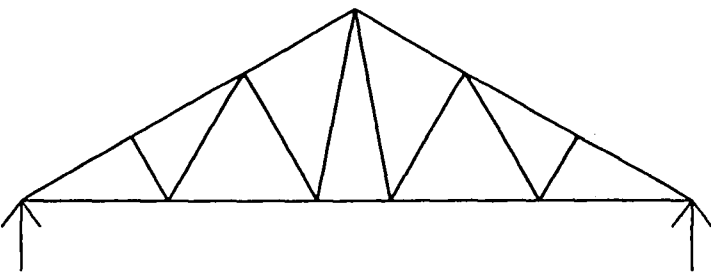


Fig. (2)



University of Moratuwa, Sri Lanka  
Electronic Theses & Dissertations  
www.lib.mrt.ac.lk

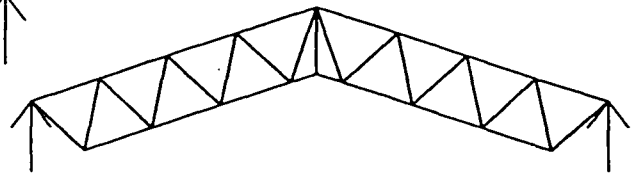


Fig.(3.1)

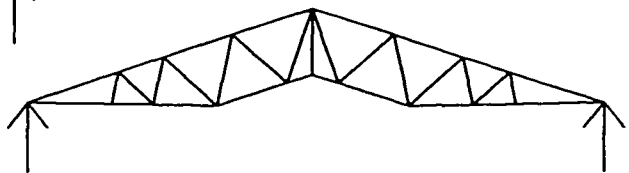
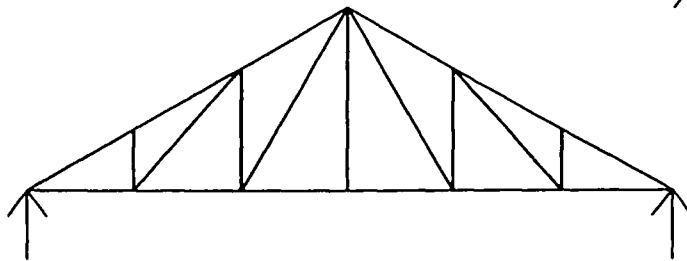


Fig.(3.2)

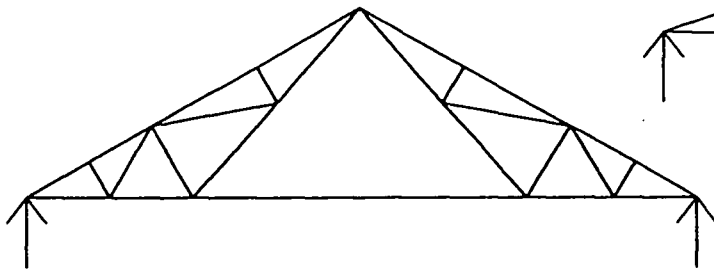


Fig.(3.3)

Fig. (3)