

REFERENCES

- [1] State economic and trade commission of the people's Republic of china "Technical rule for design auxiliary power system of fossil fuel power plant" China, Sept 1 2002.
- [2] Public Utility Commission of Sri Lanka.; China National Machinery & Equipment Import & Export Corporation.; CHD Power Plant Operation Co., Ltd.; , "Centralized Control operation Regulation (Revision Two)" ,May 1 2011
- [3] State economic and trade commission of the people's Republic of china "Technical code for designing DC system of power projects" China, June 1 2004.
- [4] El-Sharkawi, Emad; Shaffie, Hassan; King, Denis J.; , "AC Auxiliary Power System Design for the Shoubrah El-Kheima Power Station," *Power Engineering Review, IEEE*, vol.PER-4, no.8, pp.37-38, Aug. 1984
- [5] Buchta, J.; Pawlik, M.; Szubert, R.; , "Operation of an auxiliary electrical system of power plant in emergency conditions of power system," *Electrical Power & Energy Conference (EPEC), 2009 IEEE* vol., no., pp.1-6, 22-23 Oct. 2009
- [6] Buchta, J.; Pawlik, M.; Szubert, R.; , "Simulation of auxiliary electrical system working conditions during power plant transition to house load operation," *Energy Conversion Congress and Exposition (ECCE), 2010 IEEE* , vol., no., pp.1559-1564, 12-16 Sept. 2010
- [7] Wheeler, B.; , "Design of the DC and UPS electrical power systems [of Sizewell B power station]," *Electrical and Control Aspects of the Sizewell B PWR, 1992., International Conference on* , vol., no., pp.19-25, 14-15 Sep 1992
- [8] So, K.S.; Allan, R.N.; , "Time dependent reliability assessment of electrical auxiliary systems," *Advances in Power System Control, Operation and Management, 1993. APSCOM-93., 2nd International Conference on* , vol., no., pp.661-666 vol.2, 7-10 Dec 1993

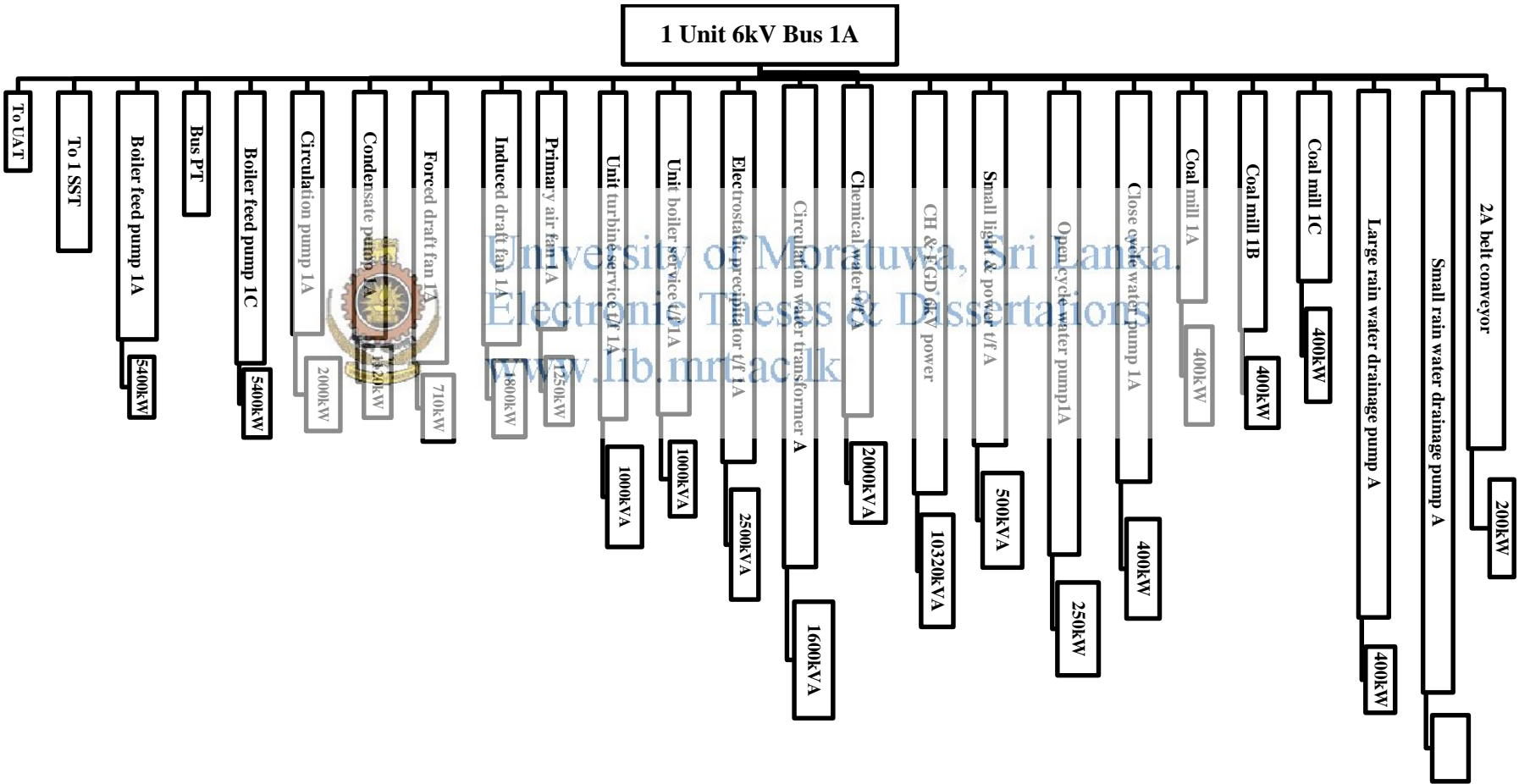
[9] Nagrath, I.J.; Kothari, D.P.;, ” Electrical Machines” published by Tata McGraw-Hill Publishing Company Limited India ,Chapter no., pp.407-409 chapter 8.10, published July 1990

[10] Arora, S.C.; Domkundwar, S.; , “A Course in Power Plant Engineering” published by Dhanpat Rai & Co.(P) Ltd. India, Chapter no., pp.13.1-13.33 chapter 13, published year 2001

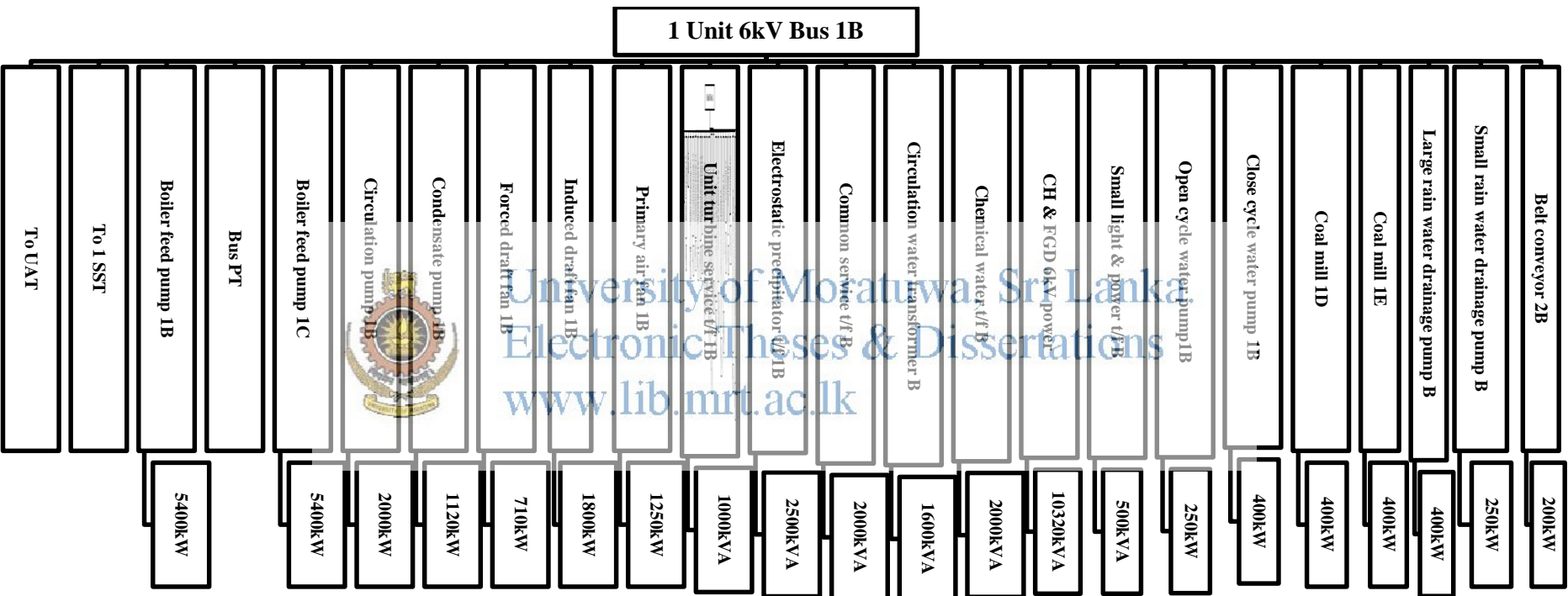


University of Moratuwa, Sri Lanka.
Electronic Theses & Dissertations
www.lib.mrt.ac.lk

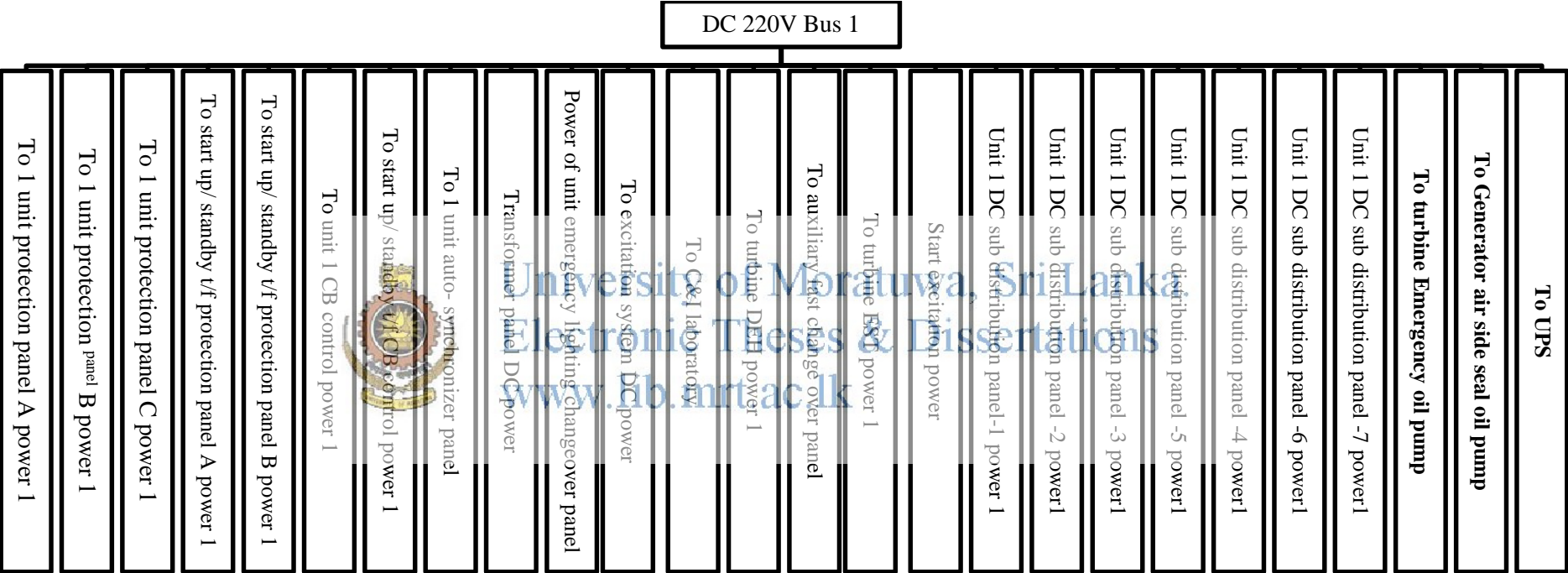
Appendix A: Single line diagram of Unit/Standby Auxiliary 6kV Bus 1A Electrical supply



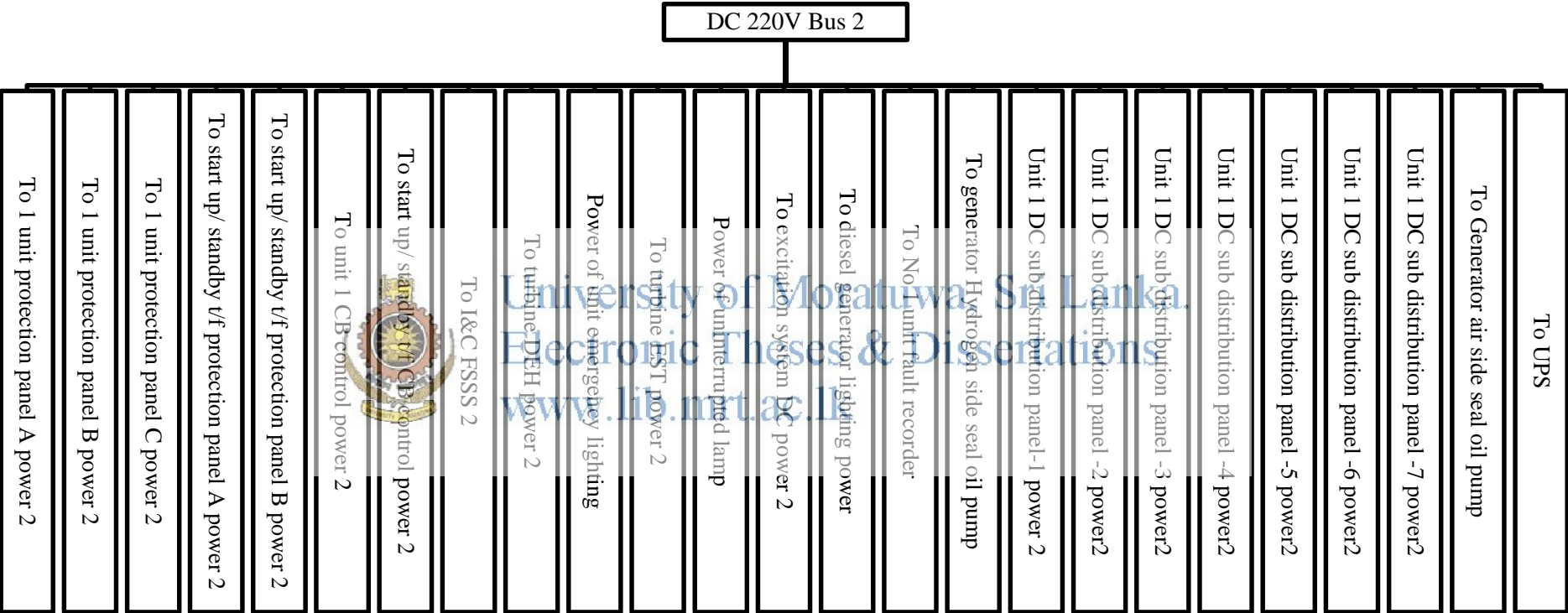
Appendix B: Single line diagram of Unit/Standby Auxiliary 6kV Bus 1B Electrical supply



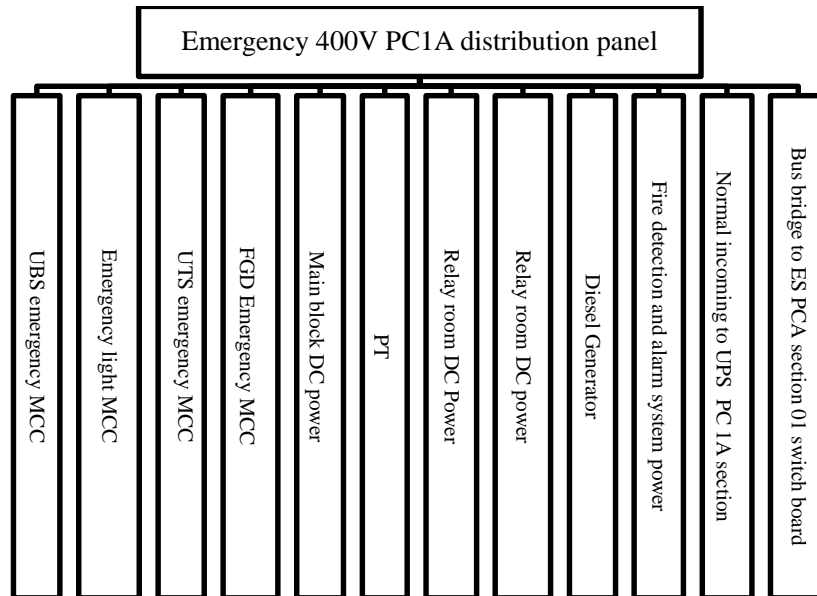
Appendix C: Single line diagram of DC 220V Bus 1 Power Distribution



Appendix D: Single line diagram of DC 220V Bus 2 Power Distribution

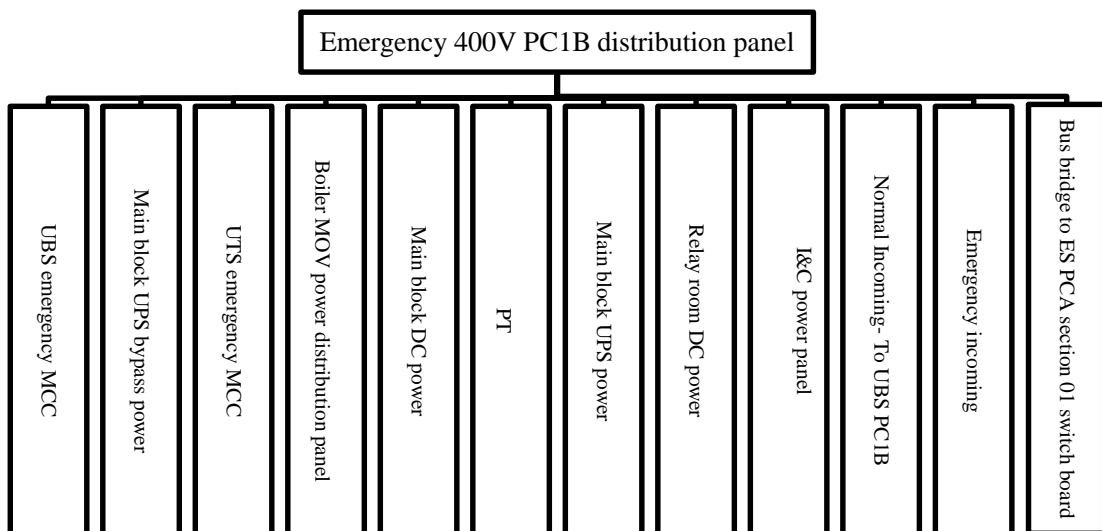


Appendix E: Single line diagram of 400V AC Emergency (Stand by Diesel Generator) supply Power Distribution A



University of Moratuwa, Sri Lanka.
 Electronic Theses & Dissertations
www.lib.mrt.ac.lk

Appendix F: Single line diagram of 400V AC Emergency (Stand by Diesel Generator) supply Power Distribution B



Appendix G: Transmission line and Transformer Data

From Bus Name	To Bus Name	Line R (pu)	Line X (pu)	Line Y (pu)
Kelanitissa 220.00	Biyagama 220.00	0.00134	0.00764	0.02361
Biyagama 220.00	Kotugoda 220.00	0.00308	0.01567	0.01567
Kotugoda 220.00	Veyangoda 220.00	0.001343	0.010744	0.033184
Veyangoda 220.00	New Chilaw 220.00	0.003878	0.027302	0.079684
New Chilaw 220.00	PCPP 220.00	0.004304	0.04478	0.144367
New laxapana 132	Polpitiya 132	0.0072	0.01870	0.0390
Polpitiya 132	Seethawaka132	0.022	0.0562	0.121
Seethawaka 132	Kolonnawa 132	0.0378	0.09656	0.0208
Kelanitissa 132	Kolonnawa 132	0.00059	0.00256	0.0005
Kothmale220	Biyagama 220	0.00554	0.04457	0.13764
Heladanavi 132	Puttalam 132	0.00288	0.01466	0.00342
Puttalam 132	New Chilaw 132	0.062751	0.141281	0.02992
Puttalam 33	PCPP 33	0.170611	0.301791	0.01455
Kerawalapitiya 220	Kotugoda 220	0.001413	0.01138	0.035143

Transformer	Reactance X (pu)	Transformer	Reactance X (pu)
Kelanitissa 15kV/132kV tr	0.142	Kotugoda 220kV/33kV tr	0.356
Kelanitissa 11/33kV tr	0.572	Kerawalapitiya 14.5/220kV tr	0.01335
Kelanitissa 132/220kV tr	0.0946	Heladanavi 15kV/132kV tr	0.0818
Norochchole 220/6kV tr	0.12	New chilaw 132/220kV	0.0583
New luxapana 12.5/132kV tr	0.0818	Norochchole 33/6kV tr	0.025
Seethawaka 132/33kV tr	0.356	Puttalam 132/33kV tr	0.0315
Kolonnawa 132/33kV tr	0.1666	Kelanitissa Combine cycle 15/220kV tr	0.0743
Biyagama 220/33kV tr	0.356		

Appendix H: Model no 20V4000G63L of MTU engine literature

2.7 20V 4000 Gx3 engine data: Continuous operation, variable 3B, optimized fuel consumption

Explanation:

- DL Ref. value: Continuous power
- BL Ref. value: Fuel stop power
- A Design value
- G Guaranteed value
- R Guideline value
- L Limit value, up to which the engine can be operated, without change (e.g. of power settings).
- N Not yet defined value
- Not applicable
- X Applicable

REFERENCE CONDITIONS

Engine model		20V 4000G23	20V 4000G63	20V 4000G63L	20V 4000G83	20V 4000G83L
Application group		3B	3B	3B	3B	3B
Intake air temperature	°C	25	25	25	25	25
Charge cooler temperature	°C	55	55	55	55	55
Radiator inlet temperature	°C	-	-	-	-	-
Barometric pressure	mbar	1000	1000	1000	1000	1000
Site altitude above sea level	m	100	100	100	100	100

POWER-RELATED DATA (power ratings are net brake power as per ISO 3046)

Number of cylinders		20	20	20	20	20
Rated engine speed	A rpm	1500	1500	1500	1800	1800
Continuous power ISO 3046 (10% overload capability, design power DIN 6280, ISO 9528)	A kW	2200	2420	2590	2740	3010
Fuel stop power	A kW	2420	2662	2849	3014	3311

GENERAL CONDITIONS (for maximum power)

Number of cylinders		20	20	20	20	20
Intake depression (new filter)	A mbar	15	15	15	15	15
Intake depression	L mbar	50	50	50	50	50

Appendix I.1: Generation Plant Dispatch with the Lakvijaya Coal power Plant on 02.01.2012

No	Generation	MW	MW at 30Minute Intervals																										
			0:30	1:00	1:30	2:00	2:30	3:00	3:30	4:00	4:30	5:00	5:30	6:00	6:30	7:00	7:30	8:00	8:30	9:00	9:30	10:00	10:30	11:00	11:30	12:00	12:30	13:00	
1	MAHAWELI COMPLEX LAXAPANA	MW	37	32	38	32	25	25	43	20	63	80	76	66	64	121	108	114	109	111	99	119	112	142	132	100	98	88	
2	COMLPEX	MW	19	19	19	19	19	19	19	19	19	19	19	19	19	103	25	25	19	19	19	19	19	19	59	19	19	19	
3	SAMANALAWEWA	MW	12	12	12	12	12	12	12	12	12	24	24	42	40	37	36	70	36	69	89	132	132	132	63	63	68		
4	Kps - Gt 01	MW	0	0	0	0	0	0	0	0	0	0	0	0	0	0	0	0	0	0	0	0	0	0	0	0	0	0	
5	Kps - Gt 02	MW	0	0	0	0	0	0	0	0	0	0	0	0	0	0	14	14	14	14	14	14	14	14	14	14	14	14	
6	Kps - Gt 03	MW	0	0	0	0	0	0	0	0	0	0	0	0	0	0	16	16	16	16	16	16	15	15	15	16	0	0	
7	Kps - Gt 04	MW	0	0	0	0	0	0	0	0	0	0	0	0	0	18	17	17	17	17	17	17	17	17	17	17	0	0	
8	Kps - Gt 05	MW	0	0	0	0	0	0	0	0	0	0	0	0	0	18	18	18	18	18	18	18	18	18	17	17	18	18	
9	Gas Turbine 07	MW	0	0	0	0	0	0	0	0	0	0	0	0	0	0	0	0	0	0	0	0	0	0	0	0	0	0	
10	Kps Jebic (GT08)	MW	0	0	0	0	0	0	0	0	0	0	0	0	0	0	0	0	0	0	0	0	0	0	40	60	60	0	
11	Kps JBIC (STEAM)	MW	0	0	0	0	0	0	0	0	0	0	0	0	0	0	0	0	0	0	0	0	0	0	0	0	0	0	
12	Sapugaskanda Diesel	MW	118	118	118	118	118	118	118	118	118	118	116	116	94	94	99	107	108	108	108	108	108	108	108	105	105	90	85
13	Lakvijaya Coal	MW	158	148	148	148	148	148	148	150	148	149	165	215	252	253	251	243	225	241	253	268	272	271	272	263	270	271	270
14	Other Hydro(Kukule)	MW	0	0	0	0	0	0	0	0	0	0	0	0	0	0	0	0	0	0	0	0	0	0	0	0	0	0	0
15	Asia Power	MW	42	42	42	42	42	42	42	42	42	42	42	42	43	43	43	43	43	43	42	42	42	42	42	42	42	42	42
16	Lakdanavi	MW	0	0	0	0	0	0	0	0	0	0	0	0	0	0	0	20	23	23	23	23	23	23	23	23	23	23	23
17	Barge	MW	60	61	61	60	60	60	60	60	60	61	60	60	61	60	60	60	60	61	60	60	60	60	60	60	60	60	60
18	AES - Kps	MW	0	0	0	0	0	0	0	0	0	0	0	0	0	0	0	0	0	0	0	0	0	0	0	0	0	0	0
19	AES - Matara	MW	0	0	0	0	0	0	0	0	23	52	108	157	160	157	159	160	152	159	157	161	160	160	160	162	160	162	161
20	ACE - Embilipitiya	MW	24	24	24	24	24	24	24	24	24	24	24	24	24	24	24	24	24	24	24	24	24	24	24	24	24	24	24
21	ACE - Horana	MW	43	42	42	42	42	43	53	60	86	85	86	86	86	85	86	86	86	86	86	86	86	85	85	85	85	84	84
22	Heladhanavi	MW	25	25	25	25	25	25	25	25	25	25	25	25	25	25	25	25	25	25	24	25	24	24	24	24	24	24	24
23	West Coast GT1	MW	83	69	66	66	67	50	51	71	83	83	83	83	83	83	83	83	83	84	83	83	83	83	83	83	83	83	83
24	West Coast GT2	MW	0	0	0	0	0	0	0	46	41	61	74	82	85	0	0	41	69	78	95	94	93	86	67	93	93	92	
25	Wast Coast Steam	MW	124	114	114	114	115	115	114	71	84	119	152	167	170	0	0	0	0	52	44	43	55	62	132	193	193	190	
26	Nothern Power	MW	0	0	0	0	0	0	0	0	0	0	0	0	0	0	0	0	0	0	0	0	0	0	0	0	0	0	0
27	Emerg Power Agriko CEB	MW	8	8	7	7	7	7	7	8	8	13	13	16	17	16	13	12	9	7	7	7	8	8	8	8	8	7	
28	POWER(Chunnakam)	MW	3	3	3	3	3	3	3	4	4	5	6	7	8	7	6	6	6	6	7	7	7	7	7	7	7	7	7
	CEB HYDRO	MW	68	63	69	63	56	56	74	51	94	111	119	109	125	264	170	175	198	166	187	227	263	293	323	182	180	175	
	CEB THERMAL	MW	276	266	266	266	266	266	268	266	267	283	333	368	369	345	387	389	413	426	441	445	443	444	431	479	453	447	
	PRIVTE POWER	MW	409	385	381	380	382	366	376	407	476	564	668	742	753	494	493	534	571	642	645	648	658	657	710	795	796	790	
	EMER.POWER	MW	3	3	3	3	3	3	3	4	4	5	6	7	8	7	6	6	6	6	7	7	7	7	7	7	7	7	
	Total Dispatch	MW	756	717	719	712	707	691	721	728	841	963	1126	1226	1255	1110	1056	1104	1188	1240	1280	1327	1371	1401	1471	1463	1436	1419	
	20% Margin	MW	151	143	144	142	141	138	144	146	168	193	225	245	251	222	211	221	238	248	256	265	274	280	294	293	287	284	

Appendix I.2: Generation Plant Dispatch with the Lakvijaya Coal power Plant on 02.01.2012

No	Generation	MW	MW at 30Minute Intervals																				MWh		
			13:30	14:00	14:30	15:00	15:30	16:00	16:30	17:00	17:30	18:00	18:30	19:00	19:30	20:00	20:30	21:00	21:30	22:00	22:30	23:00		23:30	0:00
1	MAHAWELI COMPLEX	MW	84	84	84	84	84	84	84	84	95	95	130	233	229	226	227	156	166	111	95	92	65	67	2356.5
2		MW	19	19	19	19	19	19	19	19	19	19	111	151	151	108	49	29	29	19	19	19	19	27	775.5
3	SAMANALAWEWA	MW	68	83	63	63	68	82	59	50	69	67	77	130	130	132	112	68	28	14	14	14	14	14	1298
4	Kps - Gt 01	MW	0	0	0	0	0	0	0	0	0	0	0	0	0	0	0	0	0	0	0	0	0	0	0
5	Kps - Gt 02	MW	0	0	0	0	0	0	0	0	0	13	14	14	14	14	14	14	0	0	0	0	0	0	132.5
6	Kps - Gt 03	MW	0	0	0	0	0	0	0	0	0	0	16	16	16	16	16	16	0	0	0	0	0	0	110.5
7	Kps - Gt 04	MW	0	0	0	0	0	0	0	0	0	17	17	17	17	17	17	18	0	0	0	0	0	0	145.5
8	Kps - Gt 05	MW	0	0	0	0	0	0	0	0	0	0	18	18	18	18	18	18	0	0	0	0	0	0	152
9	Gas Turbine 07	MW	0	0	0	0	0	0	0	0	0	0	0	0	0	0	0	0	0	0	0	0	0	0	0
10	Kps Jebic (GT08)	MW	60	61	110	108	100	109	40	40	40	40	109	110	109	110	111	112	70	0	0	0	0	0	799.5
11	Kps JBIC (STEAM)	MW	0	0	0	0	0	0	0	0	0	0	0	0	0	0	0	0	0	0	0	0	0	0	0
12	Sapugaskanda Diesel	MW	97	87	84	79	80	84	89	91	91	92	92	93	93	103	107	103	108	108	110	110	110	110	2485
13	Lakvijaya Coal	MW	272	272	271	271	271	271	267	270	270	271	276	262	259	263	261	260	262	225	222	206	200	200	5636.5
14	Other Hydro(Kukule)	MW	0	0	0	0	0	0	26	26	26	52	75	75	75	75	75	26	26	0	0	0	0	0	316
15	Asia Power	MW	42	42	42	38	38	38	40	42	42	42	42	42	42	42	42	42	42	42	42	42	42	42	1004
16	Lakdanavi	MW	23	23	17	23	23	23	23	23	23	23	23	23	23	23	23	23	23	23	23	23	23	23	363.5
17	Barge	MW	60	60	60	60	60	60	60	60	60	60	60	60	60	60	60	60	60	60	60	61	61	61	1444.5
18	AES - Kps	MW	0	0	0	0	0	0	0	0	0	0	0	0	0	0	0	0	0	0	0	0	0	0	0
19	AES - Matara	MW	160	162	162	163	161	163	163	130	83	132	161	161	162	162	162	161	163	122	74	0	0	0	2688.5
20	ACE - Embilipitiya	MW	24	24	24	24	24	24	24	24	24	24	24	24	24	24	24	24	24	24	24	24	24	24	576
21	ACE - Horana	MW	84	84	85	85	85	85	85	84	85	85	85	85	85	85	87	89	89	92	92	92	91	91	1905
22	Heladhanavi	MW	24	24	24	24	24	24	24	24	24	24	24	24	24	25	25	20	25	25	25	25	25	25	587.5
23	West Coast GT1	MW	83	83	83	83	83	83	83	83	83	84	83	83	83	83	84	84	84	84	84	84	84	84	1926.5
24	West Coast GT2	MW	92	92	92	92	92	92	93	93	87	81	94	94	95	95	94	96	96	88	74	74	61	98	1627.5
25	Wast Coast Steam	MW	194	193	193	194	192	192	192	193	176	169	194	194	195	194	195	196	197	180	156	155	133	51	3232.5
26	Nothern Power	MW	0	0	0	0	0	0	0	0	0	0	0	0	0	0	0	0	0	0	0	0	0	0	0
27	Emerg Power Agriko	MW	7	7	7	7	7	7	7	7	12	10	17	18	18	18	18	18	15	10	8	3	2	2	234.5
28	CEB POWER(Chunnakam)	MW	7	7	7	7	7	7	7	7	7	11	15	15	15	15	14	14	14	13	10	12	10	9	186
	CEB HYDRO	MW	171	186	166	166	171	185	188	179	209	233	393	589	585	541	463	328	249	170	128	125	98	108	4746
	CEB THERMAL	MW	429	420	465	458	451	464	400	398	401	432	503	544	529	537	546	542	438	370	335	332	316	310	9461.5
	PRIVTE POWER	MW	793	794	789	793	789	791	794	763	699	735	807	808	811	811	812	811	818	747	662	583	547	501	15590
	EMER.POWER	MW	7	7	7	7	7	7	7	7	11	15	15	15	15	14	14	14	13	10	12	10	9	9	186
	Total Dispatch	MW	1400	1407	1427	1424	1418	1447	1389	1347	1316	1411	1718	1956	1940	1904	1835	1695	1519	1300	1135	1052	971	928	29983.5
	20% Margin	MW	280	281	285	285	284	289	278	269	263	282	344	391	388	381	367	339	304	260	227	210	194	186	

Appendix J.1: Generation Plant Dispatch with the Lakvijaya Coal power Plant on 04.05.2012

No	Generation	MW	MW at 30Minute Intervals																									
			0:30	1:00	1:30	2:00	2:30	3:00	3:30	4:00	4:30	5:00	5:30	6:00	6:30	7:00	7:30	8:00	8:30	9:00	9:30	10:00	10:30	11:00	11:30	12:00	12:30	13:00
1	MAHAWELI COMPLEX LAXAPANA	MW	25	45	45	47	35	35	40	40	55	75	116	106	111	103	121	121	116	118	141	169	190	165	187	205	153	141
2	COMLPEX	MW	74	64	64	37	37	27	27	27	27	47	100	105	105	89	86	101	122	132	128	124	124	122	122	122	125	108
3	SAMANALAWEWA	MW	9	9	9	9	9	9	9	9	9	9	9	9	9	8	68	89	109	129	129	129	129	109	89	109	109	109
4	Kps - Gt 01	MW	0	0	0	0	0	0	0	0	0	0	0	0	0	0	0	0	0	0	0	0	0	0	0	0	0	0
5	Kps - Gt 02	MW	0	0	0	0	0	0	0	0	0	0	0	0	0	0	0	0	0	0	0	0	0	0	0	0	0	0
6	Kps - Gt 03	MW	0	0	0	0	0	0	0	0	0	0	0	0	0	0	0	0	0	0	0	0	0	0	0	0	0	0
7	Kps - Gt 04	MW	0	0	0	0	0	0	0	0	0	0	0	0	0	0	0	0	0	0	0	0	0	0	0	0	0	0
8	Kps - Gt 05	MW	0	0	0	0	0	0	0	0	0	0	0	0	0	0	0	0	0	0	0	0	0	0	0	0	0	0
9	Gas Turbine 07	MW	0	0	0	0	0	0	0	0	0	0	0	0	0	0	0	0	0	0	0	0	0	0	0	0	0	0
10	Kps Jebic (GT08)	MW	0	0	0	0	0	0	0	0	0	0	0	0	0	0	0	0	0	0	0	0	0	0	0	0	0	0
11	Kps JBIC (STEAM) Sapugaskanda	MW	0	0	0	0	0	0	0	0	0	0	0	0	0	0	0	0	0	0	0	0	0	0	0	0	0	0
12	Diesel	MW	111	111	111	111	111	111	111	111	111	111	111	111	111	111	111	111	110	110	110	108	108	108	107	107	107	
13	Lakvijaya Coal Other	MW	225	215	215	203	204	198	200	203	200	210	227	238	238	241	241	238	234	242	238	236	233	233	229	233	236	236
14	Hydro(Kukule)	MW	26	0	0	0	0	0	0	0	0	0	0	0	0	0	0	0	0	0	0	0	0	0	0	0	0	0
15	Asia Power	MW	48	48	48	48	48	48	48	48	48	48	48	48	47	48	48	48	48	48	48	48	48	48	48	48	48	48
16	Lakdanavi	MW	17	17	17	17	17	17	17	17	17	17	17	17	17	17	17	17	17	17	17	17	17	17	17	17	17	17
17	Barge	MW	60	60	60	60	60	60	60	60	60	60	60	60	60	60	60	60	60	61	61	61	61	61	61	61	61	61
18	AES - Kps	MW	0	0	0	0	0	0	0	0	0	0	0	0	0	0	0	0	0	0	0	0	0	0	0	0	0	0
19	AES - Matara	MW	0	0	0	0	0	0	0	0	0	0	0	0	0	0	0	0	0	0	0	0	0	0	0	0	0	0
20	ACE - Embilipitiya	MW	83	83	76	77	76	77	76	77	77	77	78	78	78	78	78	78	78	78	77	76	76	75	75	75	75	75
21	ACE - Horana	MW	25	25	25	25	25	25	25	25	25	25	25	25	25	25	25	24	25	24	24	24	24	24	24	24	24	24
22	Heladhanavi	MW	84	84	83	83	84	83	83	84	83	83	83	83	83	83	83	83	83	83	83	83	83	83	83	83	83	83
23	West Coast GT1	MW	0	0	0	0	0	0	0	0	0	0	0	0	0	0	0	0	0	0	0	6	59	75	83	84	84	85
24	West Coast GT2	MW	132	133	133	134	133	133	133	134	135	136	135	135	136	136	135	137	136	137	133	131	87	175	181	180	181	181
25	Wast Coast Steam	MW	0	0	0	0	0	0	0	0	0	0	0	0	0	0	0	0	0	0	0	0	0	0	0	0	0	0
26	Nothern Power Emergency	MW	9	8	8	8	8	8	8	8	9	10	12	13	13	13	13	12	7	7	13	0	4	4	4	4	4	4
27	(Chunnakam)	MW	0	0	0	0	0	0	0	0	0	0	1	0	0	0	0	0	0	0	0	0	0	0	0	0	0	0
28	EMER.(Agriko)	MW	6	6	6	6	6	6	6	6	6	7	8	9	9	9	9	8	6	6	0	0	11	12	12	11	11	11
	CEB HYDRO	MW	134	118	118	93	81	71	76	76	91	131	225	220	225	201	215	290	327	359	398	422	443	396	398	436	387	358
	CEB THERMAL	MW	336	326	326	314	315	309	311	314	311	321	338	350	349	352	352	349	344	352	348	344	341	341	337	340	343	343
	PRIVTE POWER	MW	458	458	450	452	451	451	450	453	454	456	458	459	459	460	459	460	453	456	456	446	459	562	576	576	577	578
	EMER.POWER	MW	6	6	6	6	6	6	6	6	6	7	8	9	9	9	9	8	6	6	0	0	11	12	12	11	11	11
	Total Dispatch	MW	934	908	900	865	853	837	843	849	862	915	1029	1038	1042	1022	1035	1107	1130	1173	1202	1212	1254	1311	1323	1363	1318	1290
	20% Margin	MW	187	182	180	173	171	167	169	170	172	183	206	208	208	204	207	221	226	235	240	242	251	262	265	273	264	258

Appendix J.2: Generation Plant Dispatch with the Lakvijaya Coal power Plant on 04.05.2012

No	Generation	MW	MW at 30Minute Intervals																								MWh
			13:30	14:00	14:30	15:00	15:30	16:00	16:30	17:00	17:30	18:00	18:30	19:00	19:30	20:00	20:30	21:00	21:30	22:00	22:30	23:00	23:30	0:00			
1	MAHAWELI COMPLEX	MW	146	143	161	146	151	156	106	135	133	125	210	546	509	479	422	371	271	226	213	181	181	135	2573		
2	LAXAPANA COMPLEX	MW	108	97	107	107	107	97	107	130	127	111	99	126	200	200	200	173	173	153	83	78	53	25	1331		
3	SAMANALAWEWA	MW	109	89	109	109	89	89	109	52	32	32	54	131	121	121	121	101	61	1	1	1	1	1	767		
4	Kps - Gt 01	MW	0	0	0	0	0	0	0	0	0	0	0	0	0	0	0	0	0	0	0	0	0	0	0		
5	Kps - Gt 02	MW	0	0	0	0	0	0	0	0	0	0	0	0	0	0	0	0	0	0	0	0	0	0	0		
6	Kps - Gt 03	MW	0	0	0	0	0	0	0	0	0	0	0	0	0	0	0	0	0	0	0	0	0	0	0		
7	Kps - Gt 04	MW	0	0	0	0	0	0	0	0	0	0	0	0	0	0	0	0	0	0	0	0	0	0	0		
8	Kps - Gt 05	MW	0	0	0	0	0	0	0	0	0	0	0	0	0	0	0	0	0	0	0	0	0	0	0		
9	Gas Turbine 07	MW	0	0	0	0	0	0	0	0	0	0	0	0	0	0	0	0	0	0	0	0	0	0	0		
10	Kps Jebic (GT08)	MW	0	0	0	0	0	0	0	0	0	57	107	107	108	107	108	109	108	109	0	0	0	0	460		
11	Kps JBIC (STEAM)	MW	0	0	0	0	0	0	0	0	0	0	0	0	0	0	0	0	0	0	0	0	0	0	0		
12	Sapugaskanda Diesel	MW	107	107	107	107	107	107	107	107	107	109	110	110	110	110	110	110	110	110	110	110	110	110	1196		
13	Lakvijaya Coal	MW	233	231	233	238	246	252	252	258	262	268	270	269	266	268	266	267	268	269	270	262	234	233	2808		
14	Other Hydro(Kukule)	MW	0	0	0	0	0	0	0	0	0	0	75	75	75	75	75	75	26	26	0	0	0	288.5			
15	Asia Power	MW	48	47	47	47	43	47	43	43	47	47	47	47	48	48	48	49	48	48	48	48	48	48	517		
16	Lakdanavi	MW	17	17	17	17	17	17	17	17	17	17	17	17	17	17	17	17	17	17	17	17	17	17	187		
17	Barge	MW	60	60	60	60	60	60	61	60	60	60	60	60	60	60	60	60	60	60	60	60	60	60	660.5		
18	AES - Kps	MW	0	0	0	0	0	0	0	0	0	0	0	0	0	0	0	0	0	0	0	0	0	0	0		
19	AES - Matara	MW	0	0	0	0	0	0	0	0	0	0	0	0	0	0	0	0	0	0	0	0	0	0	0		
20	ACE - Embilipitiya	MW	75	75	74	74	74	74	74	75	74	75	74	74	74	74	76	75	76	77	76	75	77	823			
21	ACE - Horana	MW	24	24	24	24	24	24	18	18	18	18	18	25	25	25	25	24	25	21	25	25	25	252			
22	Heladhanavi	MW	83	83	83	83	83	83	83	83	83	83	83	83	83	83	84	83	83	83	83	83	83	84	914		
23	West Coast GT1	MW	86	86	85	85	86	85	85	80	78	82	87	87	86	87	87	87	87	88	85	78	74	67	919		
24	West Coast GT2	MW	181	185	181	181	182	182	182	167	160	167	180	185	186	186	182	184	184	185	175	161	157	146	1940		
25	Wast Coast Steam	MW	0	0	0	0	0	0	0	0	0	0	0	0	0	0	0	0	0	0	0	0	0	0	0		
26	Nothern Power	MW	3	3	3	2	3	3	3	3	3	3	5	17	18	18	18	18	16	13	13	12	11	10	99		
27	Emergency (Chunnakam)	MW	0	0	0	0	0	0	0	0	0	0	2	8	7	7	6	4	1	0	0	0	0	0	17.5		
28	EMER.(Agriko)	MW	11	11	10	10	10	10	10	9	9	10	11	14	15	15	14	14	15	13	6	6	5	5	116.5		
	CEB HYDRO	MW	363	329	377	362	347	342	322	317	292	268	438	878	905	875	818	720	580	406	323	260	235	161	4959		
	CEB THERMAL	MW	340	338	340	345	353	359	359	365	369	434	489	494	491	492	490	490	487	488	380	372	344	343	4481		
	PRIVTE POWER	MW	577	580	574	573	572	575	566	546	540	552	571	595	597	598	594	600	594	595	579	560	550	534	6311		
	EMER.POWER	MW	11	11	10	10	10	10	10	9	9	10	11	14	15	15	14	14	15	13	6	6	5	5	116.5		
	Total Dispatch	MW	1291	1258	1301	1290	1282	1286	1257	1237	1210	1264	1509	1981	2008	1980	1916	1824	1676	1502	1288	1198	1134	1043	15868		
	20% Margin		258	252	260	258	256	257	251	247	242	253	302	396	402	396	383	365	335	300	258	240	227	209			

Appendix K.1: Generation Plant Dispatch with the lakvijaya Coal power Plant on 04.08.2012

No	Generator	MW	MW at 30Minute Intervals																										
			0:30	1:00	1:30	2:00	2:30	3:00	3:30	4:00	4:30	5:00	5:30	6:00	6:30	7:00	7:30	8:00	8:30	9:00	9:30	10:00	10:30	11:00	11:30	12:00	12:30	13:00	
1	MAHAWELI COMPLEX	MW	0	0	0	0	0	0	0	0	20	20	20	20	20	20	20	20	62	87	83	93	129	157	189	195	219	234	246
2	LAXAPANA COMLPEX	MW	36	49	45	31	49	51	68	73	39	43	56	76	85	64	70	61	88	62	62	61	49	68	48	49	48	48	21
3	SAMANALAWEWA	MW	1	1	1	1	1	1	1	1	1	1	1	1	1	1	1	1	13	41	41	41	31	31	31	13	13	13	
4	Kps - Gt 01	MW	0	0	0	0	0	0	0	0	0	0	0	0	0	0	0	0	0	0	0	0	0	0	0	0	0	0	0
5	Kps - Gt 02	MW	0	0	0	0	0	0	0	0	0	0	0	0	0	0	0	0	0	0	0	0	0	0	0	0	0	0	0
6	Kps - Gt 03	MW	0	0	0	0	0	0	0	0	0	0	0	0	0	0	0	0	0	0	0	0	0	0	0	0	0	0	0
7	Kps - Gt 04	MW	0	0	0	0	0	0	0	0	0	0	0	0	0	0	0	0	0	0	0	0	0	0	0	0	0	0	0
8	Kps - Gt 05	MW	0	0	0	0	0	0	0	0	0	0	0	0	0	0	0	0	0	0	0	0	0	0	0	0	0	0	0
9	Gas Turbine 07	MW	0	0	0	0	0	0	0	0	0	0	0	0	0	0	0	0	0	0	0	0	0	0	0	0	0	0	0
10	Kps Jebic (GT08)	MW	52	51	51	52	51	52	51	51	51	52	76	95	102	102	101	101	102	102	102	102	102	101	101	101	101	81	49
11	Kps JBIC (STEAM)	MW	29	29	29	29	29	29	29	29	29	29	35	47	52	51	52	52	52	52	52	52	52	52	51	51	42	31	
12	Sapugaskanda Diesel	MW	121	121	122	122	122	122	122	122	122	122	122	107	107	108	108	107	106	106	106	106	106	106	116	120	120	121	
13	Lakvijaya Coal	MW	247	237	237	237	228	228	231	235	248	249	251	265	268	266	264	263	262	258	258	264	260	262	262	253	252	251	
14	Other Hydro(Kukule)	MW	0	0	0	0	0	0	0	0	0	0	0	0	0	0	0	0	0	0	0	0	0	0	0	0	0	0	
15	Asia Power	MW	47	47	47	47	47	47	47	47	47	47	47	47	47	47	47	47	47	47	47	47	47	47	47	47	47	46	46
16	Lakdanavi	MW	0	0	0	0	0	0	0	0	12	17	17	17	17	17	17	17	11	11	11	11	11	11	11	11	11	11	
17	Barge	MW	61	61	61	57	45	45	45	55	60	60	61	60	61	61	60	61	61	60	60	60	61	60	60	60	60	60	61
18	AES - Kps	MW	0	0	0	0	0	0	0	0	0	0	0	0	0	0	0	0	0	0	0	0	0	0	0	0	0	0	
19	AES - Matara	MW	0	0	0	0	0	0	0	0	0	0	0	0	0	0	0	0	0	0	0	0	0	0	0	0	0	0	
20	ACE - Embilipitiya	MW	61	42	41	41	42	42	42	42	57	83	77	79	77	76	76	83	82	83	83	83	83	82	83	83	82	82	82
21	ACE - Horana	MW	25	25	25	25	24	25	25	25	25	25	25	25	25	25	25	25	25	25	25	24	24	24	24	24	24	24	
22	Heladhanavi	MW	98	98	98	98	84	84	82	84	98	98	98	98	98	98	98	98	98	98	98	97	98	97	97	97	97	97	
23	West Coast GT1	MW	62	62	62	57	58	57	57	64	64	64	68	74	80	74	75	77	86	86	86	86	86	86	86	87	87	86	85
24	West Coast GT2	MW	143	144	143	135	135	135	131	147	148	147	153	164	176	169	166	170	193	192	191	192	192	192	191	193	191	182	
25	Wast Coast Steam	MW	0	0	0	0	0	0	0	0	0	0	0	0	0	0	0	0	0	0	0	0	0	0	0	0	0	0	
26	Nothern Power	MW	13	13	13	13	13	12	12	13	14	15	18	20	22	22	22	22	20	5	5	6	6	7	7	8	6	10	
27	Emergency Agriko Emerg CEB	MW	0	0	0	0	0	0	0	0	0	0	0	0	0	0	0	0	0	0	0	0	0	0	0	0	0	0	
28	Chunnakum)	MW	0	0	0	0	0	0	0	0	0	0	0	0	0	0	0	0	0	0	0	0	0	0	0	0	0	0	
	CEB HYDRO	MW	37	50	46	32	50	52	69	74	60	64	77	97	106	85	91	124	188	186	196	231	237	288	274	281	295	280	
	CEB THERMAL	MW	449	438	439	440	430	431	433	437	450	452	484	514	529	528	524	523	522	518	517	524	519	521	530	525	495	452	
	PRIVTE POWER	MW	510	492	490	473	448	447	441	477	513	551	564	584	603	589	586	600	629	607	606	606	607	607	607	609	603	598	
	EMER.POWER	MW	0	0	0	0	0	0	0	0	0	0	0	0	0	0	0	0	0	0	0	0	0	0	0	0	0	0	
	Grand Total	MW	996	980	975	945	928	930	943	988	1023	1067	1125	1195	1238	1202	1201	1247	1339	1311	1319	1361	1363	1416	1411	1415	1393	1330	
	20% margin	MW	199	196	195	189	186	186	189	198	205	213	225	239	248	240	240	249	268	262	264	272	273	283	282	283	279	266	

Appendix K.2: Generation Plant Dispatch with the Lakvijaya Coal power Plant on 04.08.2012 cont

No	Generator	MW	MW at 30Minute Intervals																								MWh
			13:30	14:00	14:30	15:00	15:30	16:00	16:30	17:00	17:30	18:00	18:30	19:00	19:30	20:00	20:30	21:00	21:30	22:00	22:30	23:00	23:30	0:00			
1	MAHAWELI COMPLEX	MW	264	214	199	152	129	114	86	74	99	84	158	293	238	287	243	208	140	91	71	51	30	28	1626.5		
2	LAXAPANA COMLPEX	MW	31	51	51	51	61	71	99	99	52	87	109	218	220	219	218	172	143	72	48	27	26	26	1075.5		
3	SAMANALAWEWA	MW	1	1	1	1	1	1	1	1	1	31	31	61	61	61	41	31	14	1	1	1	1	1	172.5		
4	Kps - Gt 01	MW	0	0	0	0	0	0	0	0	0	0	0	0	0	0	0	0	0	0	0	0	0	0	0		
5	Kps - Gt 02	MW	0	0	0	0	0	0	0	0	0	0	12	12	12	12	13	13	13	13	0	0	0	0	50		
6	Kps - Gt 03	MW	0	0	0	0	0	0	0	0	0	0	15	15	15	15	15	15	15	15	0	0	0	0	60		
7	Kps - Gt 04	MW	0	0	0	0	0	0	0	0	0	0	0	18	18	18	18	18	18	18	0	0	0	0	63		
8	Kps - Gt 05	MW	0	0	0	0	0	0	0	0	0	0	17	17	17	17	18	18	18	18	0	0	0	0	70		
9	Gas Turbine 07	MW	0	0	0	0	0	0	0	0	0	0	0	0	0	0	0	0	0	0	0	0	0	0	0		
10	Kps Jebic (GT08)	MW	52	59	95	95	101	101	101	102	101	103	102	102	102	102	103	103	103	103	82	82	82	82	1029		
11	Kps JBIC (STEAM)	MW	29	32	44	45	43	52	52	52	52	52	52	52	52	52	53	52	52	52	52	45	39	38	522		
12	Sapugaskanda Diesel	MW	120	121	121	121	122	122	122	122	122	122	122	122	122	122	118	118	118	119	119	119	118	118	1325		
13	Lakvijaya Coal	MW	251	248	252	251	255	260	254	256	255	255	251	247	251	251	250	247	245	248	247	248	229	229	2751		
14	Other Hydro(Kukule)	MW	0	0	0	0	0	0	0	0	0	0	26	26	38	38	38	38	38	38	30	0	0	0	155		
15	Asia Power	MW	46	46	46	40	40	40	41	46	46	42	42	46	46	46	46	46	46	46	47	47	47	47	492.5		
16	Lakdanavi	MW	11	11	11	11	11	11	11	11	11	11	11	11	11	11	11	11	11	11	11	11	11	11	121		
17	Barge	MW	60	61	60	60	60	61	60	60	60	61	60	61	60	61	60	61	60	60	60	60	60	60	663		
18	AES - Kps	MW	0	0	0	0	0	0	0	0	0	0	0	0	0	0	0	0	0	0	0	0	0	0	0		
19	AES - Matara	MW	0	0	0	0	0	0	0	0	0	0	0	0	0	0	0	0	0	0	0	0	0	0	0		
20	ACE - Embilipitiya	MW	83	84	83	83	82	82	82	83	82	82	84	84	82	84	82	83	83	83	83	83	84	84	912.5		
21	ACE - Horana	MW	24	24	24	24	24	24	24	24	24	25	25	25	25	25	25	25	25	25	25	25	25	25	270.5		
22	Heladhanavi	MW	97	97	97	96	96	97	97	97	97	97	97	97	97	97	97	98	98	98	98	98	98	98	1069.5		
23	West Coast GT1	MW	85	85	85	85	88	87	87	85	81	88	86	87	86	86	86	86	85	87	85	74	58	47	904.5		
24	West Coast GT2	MW	183	181	183	181	189	190	189	182	176	183	190	193	193	193	193	192	193	194	183	165	140	116	1991		
25	Wast Coast Steam	MW	0	0	0	0	0	0	0	0	0	0	0	0	0	0	0	0	0	0	0	0	0	0	0		
26	Nothern Power	MW	9	9	9	9	9	9	10	10	10	10	14	18	22	22	22	20	25	17	15	18	17	15	159.5		
27	Emergency Agriko	MW	0	0	0	0	0	0	0	0	0	0	7	10	17	16	16	15	10	8	7	0	0	0	53		
28	Emerg CEB Chunnakum)	MW	0	0	0	0	0	0	0	0	0	1	0	0	0	0	0	0	0	0	0	0	0	0	0.5		
	CEB HYDRO	MW	296	266	251	204	191	186	186	174	152	202	324	598	557	605	540	449	335	202	150	79	57	55	3029.5		
	CEB THERMAL	MW	452	460	512	512	521	535	529	532	530	533	571	585	589	589	589	587	584	583	501	493	487	467	5870.5		
	PRIVTE POWER	MW	598	598	598	589	599	601	601	598	587	600	609	622	622	625	622	622	626	621	607	582	540	502	6637		
	EMER.POWER	MW	0	0	0	0	0	0	0	0	0	7	10	17	16	16	15	10	8	7	0	0	0	0	53		
	Grand Total	MW	1346	1324	1361	1305	1311	1322	1316	1304	1269	1335	1511	1815	1785	1835	1767	1673	1555	1414	1265	1154	1084	1024	15537.5		
	20% margin	MW	269	265	272	261	262	264	263	261	254	267	302	363	357	367	353	335	311	283	253	231	217	205			

Appendix L.1: Generation Plant Dispatch data without Lakvijaya Coal power Plant on 02.01.2012

No	Generator	MW	MW at 30Minute Intervals																										
			0:30	1:00	1:30	2:00	2:30	3:00	3:30	4:00	4:30	5:00	5:30	6:00	6:30	7:00	7:30	8:00	8:30	9:00	9:30	10:00	10:30	11:00	11:30	12:00	12:30	13:00	
1	MAHAWELI COMPLEX	MW	80	80	80	80	80	80	80	80	80	100	150	180	175	175	175	170	170	120	120	120	120	120	120	120	120	120	
2	LAXAPANA COMPLEX	MW	40	40	40	40	40	40	40	40	40	40	80	100	100	100	110	100	120	100	45	45	50	90	120	125	90	70	
3	SAMANALAWEWA	MW	12	12	12	12	12	12	12	12	12	12	24	24	38	40	37	36	70	36	69	89	132	132	132	63	63	68	
4	Kps - Gt 01	MW	0	0	0	0	0	0	0	0	0	0	0	0	0	0	0	0	0	0	0	0	0	0	0	0	0	0	
5	Kps - Gt 02	MW	0	0	0	0	0	0	0	0	0	0	0	0	0	0	0	0	0	14	14	14	14	14	14	14	14	14	
6	Kps - Gt 03	MW	0	0	0	0	0	0	0	0	0	0	0	0	0	0	0	0	0	16	16	16	15	15	15	16	16	16	
7	Kps - Gt 04	MW	0	0	0	0	0	0	0	0	0	0	0	0	0	0	0	17	17	17	17	17	17	17	17	17	16	16	
8	Kps - Gt 05	MW	0	0	0	0	0	0	0	0	0	0	0	0	0	18	18	18	18	18	18	18	18	18	18	17	17	18	18
9	Gas Turbine 07	MW	0	0	0	0	0	0	0	0	0	0	0	0	0	100	100	100	100	100	100	100	100	100	100	100	100	100	
10	Kps Jebic (GT08)	MW	0	0	0	0	0	0	0	0	0	0	0	0	0	0	0	0	0	0	0	0	0	0	0	40	60	60	
11	Kps JBIC (STEAM)	MW	0	0	0	0	0	0	0	0	0	0	0	0	0	0	0	0	0	0	0	0	0	0	0	0	0	0	
12	Sapugaskanda Diesel	MW	118	118	118	118	118	118	118	118	118	118	118	116	116	116	94	99	90	108	116	108	108	108	108	105	105	105	105
13	Lakvijaya Coal	MW	0	0	0	0	0	0	0	0	0	0	0	0	0	0	0	0	0	0	0	0	0	0	0	0	0	0	
14	Other Hydro	MW	0	0	0	0	0	0	0	0	0	0	0	0	0	0	0	0	0	0	0	0	0	0	0	0	0	0	
15	Asia Power	MW	42	42	42	42	42	42	42	42	42	42	42	42	43	43	43	43	43	43	42	42	42	42	42	42	42	42	
16	Lakdanavi	MW	23	23	23	23	23	23	23	23	23	23	23	23	23	23	23	23	23	23	23	23	23	23	23	23	23	23	
17	Barge	MW	60	61	61	60	60	60	60	60	60	60	61	60	60	61	60	60	60	61	60	60	60	60	60	60	60	60	
18	AES – KPS	MW	0	0	0	0	0	0	0	0	0	0	0	0	0	0	0	0	0	0	0	0	0	0	0	0	0	0	
19	AES - Matara	MW	0	0	0	0	0	0	0	0	23	80	108	157	160	161	159	140	152	159	157	161	160	160	162	160	162	161	
20	ACE - Embilipitiya	MW	24	24	24	24	24	24	24	24	24	24	24	24	24	24	24	24	24	24	24	24	24	24	24	24	24	24	
21	ACE - Horana	MW	43	42	42	42	42	43	53	60	86	85	86	86	86	85	50	86	86	86	86	86	86	86	85	85	85	84	84
22	Heladhanavi	MW	67	67	67	67	67	67	67	67	67	67	67	67	67	67	67	67	50	80	90	90	90	90	90	90	90	90	
23	West Coast GT1	MW	83	69	66	66	67	50	51	71	83	83	83	83	83	83	83	83	83	84	83	83	83	83	83	83	83	83	
24	West Coast GT2	MW	0	0	0	0	0	0	0	46	41	61	85	81	85	0	0	42	39	78	95	94	93	86	67	93	93	92	
25	Wast Coast Steam	MW	153	128	134	128	122	122	141	73	130	150	156	160	170	0	0	0	0	50	91	123	121	119	180	171	158	159	
26	Nothern Power	MW	0	0	0	0	0	0	0	0	0	0	0	0	0	0	0	0	0	0	0	0	0	0	0	0	0	0	
27	Emergency (Agriko) CEB	MW	8	8	7	7	7	7	7	8	8	13	13	16	17	7	7	7	7	7	7	7	8	8	8	8	8	7	
28	POWER(Chunnakam)	MW	3	3	3	3	3	3	3	4	4	5	6	7	8	7	6	6	6	6	7	7	7	7	7	7	7	7	
	CEB HYDRO	MW	132	132	132	132	132	132	132	132	132	152	254	304	313	315	322	306	360	256	234	254	302	342	372	308	273	258	
	CEB THERMAL	MW	118	118	118	118	118	118	118	118	118	118	116	116	234	212	234	225	273	281	273	272	272	268	309	329	329		
	PRIVTE POWER	MW	503	464	466	459	454	438	468	474	587	688	748	799	818	554	516	558	597	705	758	793	790	780	824	839	827	825	
	EMER.POWER	MW	3	3	3	3	3	3	3	4	4	5	6	7	8	7	6	6	6	6	7	7	7	7	7	7	7	7	
	Total Dispatch	MW	756	717	719	712	707	691	721	728	841	963	1126	1226	1255	1110	1056	1104	1188	1240	1280	1327	1371	1401	1471	1463	1436	1419	
	Old dispatch	MW	756	717	719	712	707	691	721	728	841	963	1126	1226	1255	1110	1056	1104	1188	1240	1280	1327	1371	1401	1471	1463	1436	1419	
	New dispatch	MW	756	717	719	712	707	691	721	728	841	963	1126	1226	1255	1110	1056	1104	1188	1240	1280	1327	1371	1401	1471	1463	1436	1419	
	Difference	MW	0	0	0	0	0	0	0	0	0	0	0	0	0	0	0	0	0	0	0	0	0	0	0	0	0	0	
	20% Margin	MW	151	143	144	142	141	138	144	146	168	193	225	245	251	222	211	221	238	248	256	265	274	280	294	293	287	284	

Appendix L.2: Generation Plant Dispatch data without Lakvijaya Coal power Plant on 02.01.2012 cont

No	Generator	MW	MW at 30Minute Intervals																				MWh		
			13:30	14:00	14:30	15:00	15:30	16:00	16:30	17:00	17:30	18:00	18:30	19:00	19:30	20:00	20:30	21:00	21:30	22:00	22:30	23:00		23:30	0:00
1	MAHAWELI COMPLEX	MW	90	84	84	84	84	84	84	84	75	75	186	292	264	250	253	167	170	170	120	70	60	60	1445
2	LAXAPANA COMPLEX	MW	45	55	55	55	55	90	110	90	80	80	160	190	200	190	132	120	100	40	40	40	40	40	1003.5
3	SAMANALAWEWA	MW	68	83	63	63	68	82	80	50	50	67	77	130	130	132	112	68	28	14	14	14	14	14	710.5
4	Kps - Gt 01	MW	0	0	0	0	0	0	0	0	0	0	0	0	0	0	0	0	0	0	0	0	0	0	0
5	Kps - Gt 02	MW	14	14	14	14	14	0	0	0	0	0	0	0	0	0	0	0	0	0	0	0	0	0	35
6	Kps - Gt 03	MW	16	16	16	16	16	0	0	0	0	0	0	0	0	0	0	0	0	0	0	0	0	0	40
7	Kps - Gt 04	MW	16	16	16	16	16	0	0	0	0	0	0	0	0	0	0	0	0	0	0	0	0	0	40
8	Kps - Gt 05	MW	18	18	18	18	18	0	0	0	0	0	0	0	0	0	0	0	0	0	0	0	0	0	45
9	Gas Turbine 07	MW	100	100	100	100	100	100	90	98	95	95	100	100	100	100	102	100	115	50	0	0	0	0	872.5
10	Kps Jebic (GT08)	MW	60	61	110	108	100	109	40	40	40	40	105	112	111	110	111	112	72	0	0	0	0	0	720.5
11	Kps JBIC (STEAM)	MW	0	0	0	0	0	0	0	0	0	0	0	0	0	0	0	0	0	0	0	0	0	0	0
12	Sapugaskanda Diesel	MW	105	105	105	95	94	92	92	92	92	92	93	93	104	107	106	108	108	110	110	110	110	110	1107.5
13	Lakvijaya Coal	MW	0	0	0	0	0	0	0	0	0	0	0	0	0	0	0	0	0	0	0	0	0	0	0
14	Other Hydro	MW	0	0	0	0	0	26	26	26	26	52	75	75	75	75	75	75	26	26	0	0	0	0	329
15	Asia Power	MW	42	42	42	38	38	38	40	42	42	42	42	42	42	42	42	42	42	42	42	42	42	42	455
16	Lakdanavi	MW	23	23	23	23	23	23	23	23	23	23	23	23	23	23	23	23	23	23	23	23	23	23	253
17	Barge	MW	60	60	60	60	60	60	60	60	60	61	60	60	60	60	60	60	60	60	60	61	61	61	662
18	AES – KPS	MW	0	0	0	0	0	0	0	0	0	0	0	0	0	0	0	0	0	0	0	0	0	0	0
19	AES - Matara	MW	162	150	150	163	161	137	137	135	135	139	121	161	162	162	162	161	163	161	161	161	148	152	1672
20	ACE - Embilipitiya	MW	24	24	24	24	24	24	24	24	24	24	24	24	24	24	24	24	24	24	24	24	24	24	264
21	ACE - Horana	MW	84	84	85	85	85	85	85	84	85	85	85	85	85	85	85	87	89	89	92	92	92	91	952
22	Heladhanavi	MW	90	90	90	90	90	90	90	90	90	90	90	90	90	67	67	67	67	67	67	67	67	67	886.5
23	West Coast GT1	MW	83	83	83	83	83	83	83	83	83	84	83	83	83	83	84	84	84	84	84	84	84	84	917.5
24	West Coast GT2	MW	92	92	92	92	92	92	93	93	95	95	94	94	95	95	94	96	96	96	96	88	61	98	1015.5
25	Wast Coast Steam	MW	194	193	183	183	183	192	192	193	176	194	194	194	195	194	195	196	197	197	184	161	133	51	1987
26	Nothern Power	MW	0	0	0	0	0	0	0	0	0	0	0	0	0	0	0	0	0	0	0	0	0	0	0
27	Emergency (Agriko)	MW	7	7	7	7	7	7	7	7	12	10	17	18	18	18	18	18	15	10	8	3	2	2	112.5
28	CEB POWER(Chunnakam)	MW	7	7	7	7	7	7	7	7	7	11	15	15	15	15	14	14	14	13	10	12	10	9	115
	CEB HYDRO	MW	203	222	202	202	207	282	300	250	231	274	498	687	669	647	572	430	324	250	174	124	114	114	3488
	CEB THERMAL	MW	329	330	379	367	358	327	248	256	253	279	372	380	379	389	395	393	321	184	110	110	110	110	3189.5
	PRIVTE POWER	MW	861	848	839	848	846	831	834	834	825	847	833	874	877	853	854	858	860	853	841	806	737	695	9177
	EMER.POWER	MW	7	7	7	7	7	7	7	7	7	11	15	15	15	15	14	14	14	13	10	12	10	9	115
	Total Dispatch	MW	1400	1407	1427	1424	1418	1447	1389	1347	1316	1411	1718	1956	1940	1904	1835	1695	1519	1300	1135	1052	971	928	15969.5
	Old dispatch	MW	1400	1407	1427	1424	1418	1447	1389	1347	1316	1411	1718	1956	1940	1904	1835	1695	1519	1300	1135	1052	971	928	29983.5
	New dispatch	MW	1400	1407	1427	1424	1418	1447	1389	1347	1316	1411	1718	1956	1940	1904	1835	1695	1519	1300	1135	1052	971	928	15969.5
	Difference	MW	0	0	0	0	0	0	0	0	0	0	0	0	0	0	0	0	0	0	0	0	0	0	0
	20% Margin	MW	280	281	285	285	284	289	278	269	263	282	344	391	388	381	367	339	304	260	227	210	194	186	3193.9

Appendix M.1: Generation Plant Dispatch data without Lakvijaya Coal power Plant on 07.05.2012

No	Generator	MW	MW at 30Minute Intervals																									
			0:30	1:00	1:30	2:00	2:30	3:00	3:30	4:00	4:30	5:00	5:30	6:00	6:30	7:00	7:30	8:00	8:30	9:00	9:30	10:00	10:30	11:00	11:30	12:00	12:30	13:00
1	MAHAWELI COMPLEX	MW	60	70	63	54	42	37	43	47	59	75	116	113	121	117	121	121	116	133	147	168	190	165	186	205	159	141
2	LAXAPANA COMPLEX	MW	74	64	64	37	37	27	27	27	27	47	100	109	105	89	100	112	129	132	132	132	128	125	122	125	125	114
3	SAMANALAWEWA	MW	9	9	9	9	9	9	9	9	9	9	9	9	9	8	68	89	109	129	129	129	129	109	89	109	109	109
4	Kps - Gt 01	MW	0	0	0	0	0	0	0	0	0	0	0	0	0	0	0	0	0	0	0	0	0	0	0	0	0	0
5	Kps - Gt 02	MW	0	0	0	0	0	0	0	0	0	14	14	14	14	14	14	14	14	14	14	14	14	14	14	14	14	14
6	Kps - Gt 03	MW	0	0	0	0	0	0	0	0	0	0	0	0	0	0	0	0	0	0	0	0	0	0	0	0	0	0
7	Kps - Gt 04	MW	0	0	0	0	0	0	0	0	0	0	0	0	0	0	0	0	0	0	0	0	0	0	0	0	0	0
8	Kps - Gt 05	MW	0	0	0	0	0	0	0	0	0	18	18	18	18	18	18	18	18	18	18	18	18	18	18	18	18	18
9	Gas Turbine 07	MW	0	0	0	0	0	0	0	0	0	0	0	0	0	0	0	0	0	0	0	0	0	0	0	0	0	0
10	Kps Jebic (GT08)	MW	0	0	0	0	0	0	0	0	0	0	0	0	0	0	0	0	0	0	0	0	0	0	0	0	0	0
11	Kps JBIC (STEAM)	MW	0	0	0	0	0	0	0	0	0	0	0	0	0	0	0	0	0	0	0	0	0	0	0	0	0	0
12	Sapugaskanda Diesel	MW	111	111	111	111	111	111	111	111	111	111	111	111	111	111	111	110	110	110	108	108	108	108	107	107	107	
13	Lakvijaya Coal	MW	0	0	0	0	0	0	0	0	0	0	0	0	0	0	0	0	0	0	0	0	0	0	0	0	0	0
14	Other Hydro Kukule	MW	26	0	0	0	0	0	0	0	0	0	0	0	0	0	0	0	0	0	0	0	0	0	0	0	0	0
15	Asia Power	MW	48	48	48	48	48	48	48	48	48	48	48	48	48	48	48	48	48	48	48	48	48	48	48	48	48	48
16	Lakdanavi	MW	23	23	23	23	23	23	23	23	23	23	23	23	23	23	23	23	23	23	23	23	23	23	23	23	23	23
17	Barge	MW	60	60	60	60	60	60	60	60	60	60	60	60	60	60	60	60	60	60	61	61	61	61	61	61	61	61
18	AES - Kps	MW	160	160	160	160	160	160	160	160	160	160	160	160	160	160	160	160	160	160	160	160	160	160	160	160	160	160
19	AES - Matara	MW	24	24	24	24	24	24	24	24	24	24	24	24	24	24	24	24	24	24	24	24	24	24	24	24	24	24
20	ACE - Embilipitiya	MW	83	83	83	83	83	83	83	83	83	83	83	83	83	83	83	83	83	83	83	83	83	83	83	83	83	83
21	ACE - Horana	MW	25	25	25	25	25	25	25	25	25	25	25	25	25	25	25	25	24	25	24	24	24	24	24	24	24	24
22	Heladhanavi	MW	84	84	83	83	84	83	83	84	83	83	83	83	83	83	83	83	83	83	83	83	83	83	83	83	83	83
23	West Coast GT1	MW	0	0	0	0	0	0	0	0	0	0	0	0	0	0	0	0	0	0	0	6	59	75	83	84	84	85
24	West Coast GT2	MW	132	133	133	134	133	133	133	134	135	136	135	135	136	136	135	137	136	137	133	131	87	175	181	180	181	181
25	Wast Coast Steam	MW	0	0	0	0	0	0	0	0	0	0	0	0	0	0	0	0	0	0	0	0	0	0	0	0	0	
26	Nothern Power	MW	9	8	8	8	8	8	8	8	9	10	12	13	13	13	13	12	7	7	13	0	4	4	4	4	4	4
27	CEB Chunnakum	MW	0	0	0	0	0	0	0	0	0	0	1	0	0	0	0	0	0	0	0	0	0	0	0	0	0	
28	EMER.Agriko	MW	6	6	6	6	6	6	6	6	6	7	8	9	9	9	9	8	6	6	0	0	11	12	12	11	11	11
	CEB HYDRO	MW	169	143	136	100	88	73	79	83	95	131	225	231	235	215	229	301	334	374	408	429	447	399	397	439	393	364
	CEB THERMAL	MW	111	111	111	111	111	111	111	111	111	125	143	144	143	143	143	143	142	142	142	140	140	140	140	139	139	139
	PRIVTE POWER	MW	648	648	647	648	648	647	647	649	650	652	653	654	655	655	654	655	648	651	652	643	656	760	774	774	775	776
	EMER.POWER	MW	6	6	6	6	6	6	6	6	6	7	8	9	9	9	9	8	6	6	0	0	11	12	12	11	11	11
	Total dispatch	MW	934	908	900	865	853	837	843	849	862	915	1029	1038	1042	1022	1035	1107	1130	1173	1202	1212	1254	1311	1323	1363	1318	1290
	Old dispatch	MW	934	908	900	865	853	837	843	849	862	915	1029	1037	1042	1022	1035	1107	1130	1173	1202	1212	1254	1311	1323	1363	1318	1290
	New dispatch	MW	934	908	900	865	853	837	843	849	862	915	1029	1038	1042	1022	1035	1107	1130	1173	1202	1212	1254	1311	1323	1363	1318	1290
	Difference	MW	0	0	0	0	0	0	0	0	0	0	0	1	0	0	0	0	0	0	0	0	0	0	0	0	0	
	20% Margin	MW	187	182	180	173	171	167	169	170	172	183	206	207	208	204	207	221	226	235	240	242	251	262	265	273	264	258

Appendix M.2: Generation Plant Dispatch data without Lakvijaya Coal power Plant on 07.05.2012

No	Generator	MW	MW at 30Minute Intervals																								MWh
			13:30	14:00	14:30	15:00	15:30	16:00	16:30	17:00	17:30	18:00	18:30	19:00	19:30	20:00	20:30	21:00	21:30	22:00	22:30	23:00	23:30	0:00			
1	MAHAWELI COMPLEX	MW	146	143	161	152	151	156	106	135	133	125	210	546	511	483	424	376	276	233	222	181	185	140	2597.5		
2	LAXAPANA COMPLEX	MW	111	97	108	107	107	100	106	130	127	115	104	130	200	200	173	173	153	83	78	53	25	1340			
3	SAMANALAWEWA	MW	109	89	109	109	89	89	109	58	32	32	54	131	121	121	121	101	61	1	1	1	1	1	770		
4	Kps - Gt 01	MW	0	0	0	0	0	0	0	0	0	0	0	0	0	0	0	0	0	0	0	0	0	0	0		
5	Kps - Gt 02	MW	14	14	14	14	14	14	14	14	14	14	14	14	14	14	14	14	14	14	14	14	14	14	154		
6	Kps - Gt 03	MW	0	0	0	0	0	0	0	0	13	16	16	16	16	16	16	16	16	16	16	16	0	0	94.5		
7	Kps - Gt 04	MW	0	0	0	0	10	17	17	17	17	17	17	17	17	17	17	17	17	17	17	17	0	0	132.5		
8	Kps - Gt 05	MW	18	18	18	18	18	18	18	18	18	18	18	18	18	18	18	18	18	18	18	18	18	18	198		
9	Gas Turbine 07	MW	0	0	0	0	0	0	0	0	0	0	0	0	0	0	0	0	0	0	0	0	0	0	0		
10	Kps Jebic (GT08)	MW	0	0	0	0	0	0	0	0	0	57	107	107	108	107	108	109	108	109	0	0	0	0	460		
11	Kps JBIC (STEAM)	MW	0	0	0	0	0	0	0	0	0	0	0	0	0	0	0	0	0	0	0	0	0	0	0		
12	Sapugaskanda Diesel	MW	107	107	107	107	107	107	107	107	107	109	110	110	110	110	110	110	110	110	110	110	110	110	1196		
13	Lakvijaya Coal	MW	0	0	0	0	0	0	0	0	0	0	0	0	0	0	0	0	0	0	0	0	0	0	0		
14	Other Hydro Kukule	MW	0	0	0	0	0	0	0	0	0	0	75	75	75	75	75	75	26	26	0	0	0	0	288.5		
15	Asia Power	MW	48	48	48	48	48	48	48	48	48	48	48	48	48	48	48	48	48	48	48	48	48	48	528.5		
16	Lakdanavi	MW	23	23	23	23	23	23	23	23	23	23	23	23	23	23	23	23	23	23	23	23	23	23	253		
17	Barge	MW	60	60	60	60	60	60	60	60	60	60	60	60	60	60	60	60	60	60	60	60	60	60	660.5		
18	AES – Kps	MW	160	160	160	160	160	160	160	160	160	160	160	160	160	160	160	160	160	160	160	160	160	160	1760		
19	AES - Matara	MW	24	24	24	24	24	24	24	24	24	24	24	24	24	24	24	24	24	24	24	24	24	24	264		
20	ACE - Embilipitiya	MW	83	83	83	83	83	83	83	83	83	83	83	83	83	83	83	83	83	83	83	83	83	83	913		
21	ACE - Horana	MW	24	24	24	24	24	24	24	24	24	24	24	24	24	24	24	24	24	24	24	24	24	24	264		
22	Heladhanavi	MW	83	83	83	83	83	83	83	83	83	83	83	83	83	83	83	83	83	83	83	83	83	83	913		
23	West Coast GT1	MW	86	86	85	85	86	85	85	80	78	82	87	87	86	87	87	87	87	88	85	78	74	67	919		
24	West Coast GT2	MW	181	185	181	181	182	182	182	167	160	167	178	177	179	179	176	180	183	185	175	161	157	146	1922		
25	Wast Coast Steam	MW	0	0	0	0	0	0	0	0	0	0	0	0	0	0	0	0	0	0	0	0	0	0	0		
26	Nothern Power	MW	3	3	3	2	3	3	3	3	3	3	5	17	18	18	18	18	16	13	13	12	11	10	99		
27	CEB Chunnakum	MW	0	0	0	0	0	0	0	0	0	0	2	8	7	7	6	4	1	0	0	0	0	0	17.5		
28	EMER.Agriko	MW	11	11	10	10	10	10	10	9	9	10	11	14	15	15	14	14	15	13	6	6	5	5	116.5		
	CEB HYDRO	MW	366	329	378	368	347	345	321	323	292	272	443	882	907	879	820	725	585	413	332	260	239	166	4996		
	CEB THERMAL	MW	139	139	139	139	149	156	156	156	169	231	284	290	290	289	289	288	284	284	175	175	142	142	2252.5		
	PRIVTE POWER	MW	775	779	774	773	776	775	770	749	740	751	769	787	789	790	787	793	791	792	775	757	748	730	8485		
	EMER.POWER	MW	11	11	10	10	10	10	10	9	9	10	11	14	15	15	14	14	15	13	6	6	5	5	116.5		
	Total dispatch	MW	1291	1258	1301	1290	1282	1286	1257	1237	1210	1264	1507	1973	2001	1973	1910	1820	1675	1502	1288	1198	1134	1043	15850		
	Old dispatch	MW	1291	1258	1301	1290	1282	1286	1257	1237	1210	1264	1507	1973	2001	1973	1910	1820	1675	1502	1288	1198	1134	1043	29657		
	New dispatch	MW	1291	1258	1301	1290	1282	1286	1257	1237	1210	1264	1507	1973	2001	1973	1910	1820	1675	1502	1288	1198	1134	1043	15850		
	Difference	MW	0	0	0	0	0	0	0	0	0	0	0	0	0	0	0	0	0	0	0	0	0	0	0		
	20% Margin	MW	258	252	260	258	256	257	251	247	242	253	301	395	400	395	382	364	335	300	258	240	227	209	5931.4		

Appendix N.1: Generation Plant Dispatch data without Lakvijaya Coal power Plant on 04.08.2012

No	Generator	MW	MW at 30Minute Intervals																										
			0:30	1:00	1:30	2:00	2:30	3:00	3:30	4:00	4:30	5:00	5:30	6:00	6:30	7:00	7:30	8:00	8:30	9:00	9:30	10:00	10:30	11:00	11:30	12:00	12:30	13:00	
1	MAHAWELI COMPLEX LAXAPANA	MW	0	0	0	0	0	0	0	0	20	20	20	20	20	20	20	62	87	87	97	133	161	193	199	223	238	246	
2	COMLPEX	MW	54	38	33	31	49	51	68	73	32	43	56	73	83	52	52	54	102	111	110	113	99	120	98	91	57	24	
3	SAMANALAWEWA	MW	1	1	1	1	1	1	1	1	1	1	1	1	1	1	1	1	13	41	41	41	31	31	31	13	13	13	
4	Kps - Gt 01	MW	0	0	0	0	0	0	0	0	0	0	0	0	0	0	0	0	0	0	0	0	0	0	0	0	0	0	
5	Kps - Gt 02	MW	0	0	0	0	0	0	0	0	0	0	0	14	14	14	14	14	14	0	0	0	0	0	0	0	0	0	
6	Kps - Gt 03	MW	0	0	0	0	0	0	0	0	0	0	0	0	0	0	0	0	0	0	0	0	0	0	0	0	0	0	
7	Kps - Gt 04	MW	0	0	0	0	0	0	0	0	0	0	0	18	18	18	18	18	18	0	0	0	0	0	0	0	0	0	
8	Kps - Gt 05	MW	0	0	0	0	0	0	0	0	0	0	0	0	17	17	17	17	17	0	0	0	0	0	0	0	0	0	
9	Gas Turbine 07	MW	0	0	0	0	0	0	0	0	0	0	0	0	0	0	0	0	0	0	0	0	0	0	0	0	0	0	
10	Kps Jebic (GT08)	MW	52	51	51	52	51	52	51	51	51	52	76	95	102	102	101	101	102	102	102	102	101	101	101	101	101	101	
11	Kps JBIC (STEAM) Sapugaskanda	MW	29	29	29	29	29	29	29	29	29	37	50	60	60	60	60	60	60	60	60	60	60	60	60	60	60	60	
12	Diesel	MW	121	121	122	122	122	122	122	122	122	122	122	107	107	108	108	107	106	106	105	106	106	106	116	120	120	121	
13	Lakvijaya Coal Other Hydro	MW	0	0	0	0	0	0	0	0	0	0	0	0	0	0	0	0	0	0	0	0	0	0	0	0	0	0	
14	Kukule	MW	0	0	0	0	0	0	0	0	0	0	0	0	0	0	0	0	0	0	0	0	0	0	0	0	0	0	
15	Asia Power	MW	47	47	47	47	47	47	47	47	47	47	47	47	47	47	47	47	47	47	47	47	47	47	47	47	47	47	
16	Lakdanavi	MW	23	23	23	23	23	23	23	23	23	23	23	23	23	23	23	23	23	23	23	23	23	23	23	23	23	23	
17	Barge	MW	61	61	61	60	60	60	60	60	60	60	61	60	61	61	61	61	61	60	60	60	61	60	60	60	60	61	
18	AES – Kps	MW	160	160	160	160	160	160	160	160	160	160	160	160	160	160	160	160	160	160	160	160	160	160	160	160	160	160	
19	AES - Matara	MW	24	24	24	24	24	24	24	24	24	24	24	24	24	24	24	24	24	24	24	24	24	24	24	24	24	24	
20	ACE - Embilipitiya	MW	83	83	83	83	83	83	83	83	83	83	83	83	83	83	83	83	83	83	83	83	83	83	83	83	83	83	
21	ACE - Horana	MW	25	25	25	25	24	25	25	25	25	25	25	25	25	25	25	25	25	25	25	24	24	24	24	24	24	24	
22	Heladhanavi	MW	98	98	98	98	98	98	98	98	98	98	98	98	98	98	98	98	98	98	98	98	98	98	98	98	98	98	
23	West Coast GT1	MW	62	62	62	57	44	43	40	32	64	64	68	74	80	74	75	77	86	86	86	86	86	86	86	87	87	86	70
24	West Coast GT2	MW	143	144	143	120	100	100	100	147	170	193	193	193	193	193	193	193	193	193	193	195	193	193	193	193	193	165	
25	Wast Coast Steam	MW	0	0	0	0	0	0	0	0	0	0	0	0	0	0	0	0	0	0	0	0	0	0	0	0	0	0	
26	Nothern Power	MW	13	13	13	13	13	12	12	13	14	15	18	20	22	22	22	22	20	5	5	6	6	7	7	8	6	10	
27	Emergency Agriko Emerg CEB	MW	0	0	0	0	0	0	0	0	0	0	0	0	0	0	0	0	0	0	0	0	0	0	0	0	0	0	
28	Chunnaum	MW	0	0	0	0	0	0	0	0	0	0	0	0	0	0	0	0	0	0	0	0	0	0	0	0	0	0	
	CEB HYDRO	MW	55	39	34	32	50	52	69	74	53	64	77	94	104	73	73	117	202	239	248	287	291	344	328	327	308	283	
	CEB THERMAL	MW	202	201	202	203	202	203	202	202	202	211	248	294	318	319	318	317	317	268	267	268	267	267	277	281	281	282	
	PRIVTE POWER	MW	739	740	739	710	676	675	672	712	768	792	800	807	816	810	810	813	820	804	804	806	805	805	806	807	804	765	
	EMER.POWER	MW	0	0	0	0	0	0	0	0	0	0	0	0	0	0	0	0	0	0	0	0	0	0	0	0	0	0	
	Total Dispatch	MW	996	980	975	945	928	930	943	988	1023	1067	1125	1195	1238	1202	1201	1247	1339	1311	1319	1361	1363	1416	1411	1415	1393	1330	
	Old dispatch	MW	996	980	975	945	928	930	943	988	1023	1067	1125	1195	1238	1202	1201	1247	1339	1311	1319	1361	1363	1416	1411	1415	1393	1330	
	New dispatch	MW	996	980	975	945	928	930	943	988	1023	1067	1125	1195	1238	1202	1201	1247	1339	1311	1319	1361	1363	1416	1411	1415	1393	1330	
	Difference	MW	0	0	0	0	0	0	0	0	0	0	0	0	0	0	0	0	0	0	0	0	0	0	0	0	0	0	
	20% Margin	MW	199	196	195	189	186	186	189	198	205	213	225	239	248	240	240	249	268	262	264	272	273	283	282	283	279	266	

Appendix N.2: Generation Plant Dispatch data without Lakvijaya Coal power Plant on 04.08.2012

No	Generator	MW	MW at 30Minute Intervals																				MW			
			13:30	14:00	14:30	15:00	15:30	16:00	16:30	17:00	17:30	18:00	18:30	19:00	19:30	20:00	20:30	21:00	21:30	22:00	22:30	23:00		23:30	0:00	
1	MAHAWELI COMPLEX	MW	264	214	198	152	129	116	86	74	99	84	158	293	238	287	243	208	140	91	26	25	20	28	1586.5	
2	LAXAPANA COMPLEX	MW	35	55	59	49	74	98	122	123	68	106	116	246	220	219	218	172	143	72	59	31	20	20	1162.5	
3	SAMANALAWEWA	MW	1	1	1	1	1	1	1	1	1	31	31	61	61	61	41	31	14	1	1	1	1	1	172.5	
4	Kps - Gt 01	MW	0	0	0	0	0	0	0	0	0	0	0	0	0	0	0	0	0	0	0	0	0	0	0	
5	Kps - Gt 02	MW	0	0	0	0	0	0	0	0	0	0	14	14	14	14	14	14	14	14	14	14	14	0	70	
6	Kps - Gt 03	MW	0	0	15	15	15	15	15	15	15	15	15	15	15	15	15	15	15	15	15	15	15	0	135	
7	Kps - Gt 04	MW	0	0	0	0	0	0	0	0	0	0	18	18	18	18	18	18	18	18	18	18	0	0	81	
8	Kps - Gt 05	MW	0	0	0	0	0	0	0	0	0	0	17	17	17	17	18	18	18	18	18	0	0	0	70	
9	Gas Turbine 07	MW	0	0	0	0	0	0	0	0	0	0	0	0	0	0	0	0	0	0	0	0	0	0	0	
10	Kps Jelic (GT08)	MW	101	101	101	101	101	101	101	102	101	103	102	102	102	102	103	103	103	103	103	103	103	103	60	1101
11	Kps JBIC (STEAM)	MW	60	60	60	60	60	60	60	60	60	60	60	60	60	60	60	60	60	60	60	60	60	60	60	660
12	Sapugaskanda Diesel	MW	120	121	121	121	122	122	122	122	122	122	122	122	122	122	118	118	118	119	119	100	92	80	1283.5	
13	Lakvijaya Coal	MW	0	0	0	0	0	0	0	0	0	0	0	0	0	0	0	0	0	0	0	0	0	0	0	
14	Other Hydro Kukule	MW	0	0	0	0	0	0	0	0	0	0	38	38	38	38	38	38	38	38	38	30	0	0	167	
15	Asia Power	MW	47	47	47	47	47	47	47	47	47	47	47	47	47	47	47	47	47	47	47	47	47	47	47	517
16	Lakdanavi	MW	23	23	23	23	23	23	23	23	23	23	23	23	23	23	23	23	23	23	23	23	23	23	23	253
17	Barge	MW	60	61	60	60	60	61	60	60	60	61	60	61	60	61	60	60	60	60	60	60	60	60	60	663
18	AES - Kps	MW	160	160	160	160	160	160	160	160	160	160	160	160	160	160	160	160	160	160	160	160	160	160	160	1760
19	AES - Matara	MW	24	24	24	24	24	24	24	24	24	24	24	24	24	24	24	24	24	24	24	24	24	24	24	264
20	ACE - Embilipitiya	MW	83	83	83	83	83	83	83	83	83	83	83	83	83	83	83	83	83	83	83	83	83	83	83	913
21	ACE - Horana	MW	24	24	24	24	24	24	24	24	24	25	25	25	25	25	25	25	25	25	25	25	25	25	25	270.5
22	Heladhanavi	MW	98	98	98	98	98	98	98	98	98	98	98	98	98	98	98	98	98	98	98	98	98	98	98	1078
23	West Coast GT1	MW	70	70	85	85	88	87	87	85	81	88	86	87	86	86	86	86	85	87	85	74	58	47	889.5	
24	West Coast GT2	MW	167	173	193	193	193	193	193	193	193	193	193	193	193	193	193	193	193	194	193	193	193	193	2100.5	
25	Wast Coast Steam	MW	0	0	0	0	0	0	0	0	0	0	0	0	0	0	0	0	0	0	0	0	0	0	0	
26	Nothern Power	MW	9	9	9	9	9	9	10	10	10	10	14	18	22	22	22	20	25	17	15	18	17	15	159.5	
27	Emergency Agriko	MW	0	0	0	0	0	0	0	0	0	0	7	10	17	16	16	15	10	8	7	0	0	0	53	
28	Emerg CEB Chunnaum	MW	0	0	0	0	0	0	0	0	0	1	0	0	0	0	0	0	0	0	0	0	0	0	0	0.5
	CEB HYDRO	MW	300	270	258	202	204	215	209	198	168	221	343	638	557	605	540	449	335	202	116	57	41	49	3088.5	
	CEB THERMAL	MW	281	282	297	297	298	298	298	299	298	301	348	348	348	348	346	346	346	347	329	292	255	200	3401	
	PRIVTE POWER	MW	765	772	806	806	809	809	809	807	803	812	813	819	821	822	821	820	823	818	813	805	788	775	8868	
	EMER.POWER	MW	0	0	0	0	0	0	0	0	0	7	10	17	16	16	15	10	8	7	0	0	0	0	53	
	Total Dispatch	MW	1346	1324	1361	1305	1311	1322	1316	1304	1269	1334	1511	1815	1743	1791	1723	1630	1514	1375	1265	1154	1084	1024	15410.5	
	Old dispatch	MW	1346	1324	1361	1305	1311	1322	1316	1304	1269	1334	1511	1815	1785	1835	1767	1673	1555	1414	1265	1154	1084	1024	15537	
	New dispatch	MW	1346	1324	1361	1305	1311	1322	1316	1304	1269	1334	1511	1815	1743	1791	1723	1630	1514	1375	1265	1154	1084	1024	15410.5	
	Difference	MW	0	0	0	0	0	0	0	0	0	0	0	0	-42	-44	-44	-43	-41	-39	0	0	0	0	-126.5	
	20% Margin	MW	269	265	272	261	262	264	263	261	254	267	302	363	357	367	353	335	311	283	253	231	217	205	3107.4	