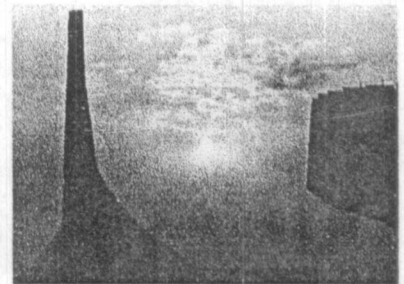


STADIA;

Architectural Evaluation of Stadia as a Socio-Cultural
and Economic
Component of a Country
with Special Reference to Sri Lanka.



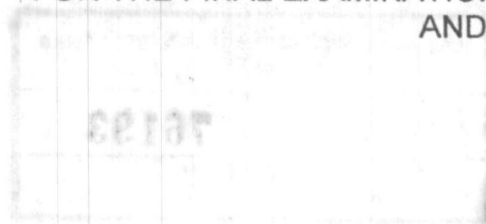
University of Moratuwa, Sri Lanka.
Electronic Theses & Dissertations
www.lib.mrt.ac.lk

72° 01'
725.826 (548.7)

LIBRARY
UNIVERSITY OF MORATUWA, SRI LANKA
MORATUWA

TH

A DISSERTATION SUBMITTED TO THE DEPT. OF ARCHITECTURE
FOR THE FINAL EXAMINATION IN M.Sc (ARCHITECTURE)
AND FOR THE PART II OF RIBA.



PMC PRASANNA
DEPT. OF ARCHITECTURE
UNIVERSITY OF MORATUWA
SRI LANKA

76193



76193

76193

C O N T E N T S

ACKNOWLEDGEMENT	i
LIST OF ILLUSTRATIONS	ii
ABSTRACT	xiii

Introduction



1 - 7

CHAPTER ONE



8 - 20

Historical Background



University of Moratuwa, Sri Lanka.
Electronic Theses & Dissertations
www.lib.mrt.ac.lk

- | | |
|---|----|
| 1. 1 Hippodrome ; The ancestor of the modern Stadia | 10 |
| 1. 2 Athens ; The genesis of the Modern Olympic movement... | 15 |

CHAPTER TWO



21 - 43

Stadium, a social island, a cultural village, an economic center and an entertainment factory.

- | | |
|---|----|
| 2. 1 Stadia as a venue for watching sports..... | 24 |
| 2. 2 Stadium as a socio-cultural and economic component of a Country..... | 30 |
| 2. 3 Multi-uses and Mix-uses of Stadia..... | 37 |

CHAPTER T h r e e

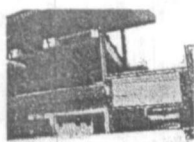


44-93

Stadia in the world; Architectural evaluation of Stadia as a Socio-cultural and Economic component of a country.

3. 1 Façade Dominants.....	47
3. 2 Large in Scale.....	54
3. 3 Monumental Buildings.....	62
3. 4 Stadia like Objects	69
3. 5 Part of the Nature.....	76
3. 6 Part of the City	84

CHAPTER F o u r

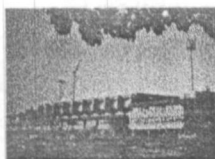


94-123

Stadia in Sri Lanka.

4. 1 Socio-Cultural and Economic Background of Urban Stadia in Colombo Metropolitan.....	97
4. 2 Khetarama Stadium.....	102
4. 3 Sugathadasa Stadium.....	108
4. 4 SSC Stadium.....	114
4. 5 Evaluation of Sri Lankan Stadium Architecture refering world context and Socio-Cultural and Economic background of the Country.....	120

Conclusion



124

BIBLIOGRAPHY.....	126
-------------------	-----

ACKNOWLEDGEMENT

The completion of this essay would have been an impossible task without the help of many, who supported me both physically and morally in producing it.

I am profoundly grateful to Prof. Nimal De Silva for giving me the necessary guidance to carry out the study and also Dr. Manawadu, Dr. LSR Perera and Dr. R. Emanuel who were always behind me.

I would also like to extend my thanks to Mr. Ravin, lecturer, department of Architecture, always made me courage and staff members of the SSC, Khetarama and Sugathadasa Stadia who gave me their hands to collect necessary information.



I am also tender my heartfelt to Mr. I.R Lorensuhewa, Mr. C. Devasinghe, Mr. Ranjan for their invaluable assistance to constrain this a success.

Last but not least I would like to thank my mother, father, mother-in-law, father-in-law and my wife for providing me the support and encouragement to carry out the study with out any other concerns.

LIST OF ILLUSTRATIONS


Fig .O.O.1	Courage, Passion, Perfidy, Fear and Endeavor	1
Fig .O.O.2	Johannesburg Stadium in Johannesburg, South Africa; designed, in its own way, to revitalize a section of the city.	2
Fig .O.O.3	Urban renewal in Seoul (Seoul Olympic village). Seoul spent \$1.66 billion for facilities directly related to the Olympics and a further \$ 1.35 for the improvement of sanitary facilities infrastructure and the urban environment in general.	2
Fig .O.O.4	Kitakyushu Media Dome in Fukuoka, Japan. More than any other sports stadium, the Media Dome is a blend of Media and Sport.	4
Fig .O.O.5	Johannesburg Stadium in Johannesburg, South Africa	5
Fig .O.O.6	Stadion Galgenwaard in Utrecht, Netherlands. The success of the original multifunctional approach is demonstrated by the rise in the number of square meters commercial space and the addition of 48 hospitality boxes.	6
Fig .O.O.7	Sugathadasa Outdoor Stadium in Colombo, Sri Lanka. Covered with a long boundary wall.	6
Fig. 1.O.1	The Epidaurus; The most beautiful, best-preserved surviving Greece Theater with two gradient sloping tier sets	8
Fig. 1.O.2	The Colosseum in Rome.	9
Fig. 1.1.1	Amphitheater in Epidaurus.c.300 BC	10
Fig. 1.1.2	Olympic stadium in Athens; First modern Olympic games-1986 Capacity 50,000	11
Fig.1.1.3	Amphitheatrum Flavium (Colosseum), Rome, Italy. 72-80 AD Capacity: 50,000	12
Fig. 1.1.4	Section of the Colosseum in Rome.	13

List of Illustrations

Fig. 1.2.1	Athens Stadium. Renovated in 1896 for First Modern Olympic games.	15
Fig. 1.2.2	Ice Hokey Dome at Stockholm. Olympics in 1912. Capacity ; 22,000	16
Fig. 1.2.3	Wembley Stadium, London Olympics in 1948	17
Fig. 1.2.4	Royal Albert Hall, London	17
Fig. 1.2.5	Stadio Flaminio in Rome, Italy. Olympics in 1960.	18
Fig. 1.2.6	Olimpiastadion, Munich, Germany. 1965-1972. Capacity: 74,000 Olympics in 1972	19
Fig. 2.0.1	Pleasure, Sorrow, Fear, Wonder and Dubiety.	21
Fig. 2.0.2	Toronto Skydome at Toronto, Canada. 1989.	22
Fig. 2.0.3	Amsterdam Arena at Amsterdam, Netherlands. 1993- 1996	23
Fig. 2.1.1	The Spectator; The most important person in the Stadium	24
Fig. 2.1.2	The Player; There is no game without him	25
Fig. 2.1.3	Football is not a matter of life and death.	26
Fig. 2.1.4	Hillsborough Stadium Disaster in Sheffield, 15 April 1989. (93 were killed and 170 injured)	26
Fig. 2.1.5	Kitakyushu Media Dome. The amazing technology; Spectator can follow every detail of cycle race, sumo, Wrestling match or concert on the screen	28
Fig. 2.1.6	Astrodome; The first Multi-function stadium in the world with fully covered roof. Socially and financially buttress sport and stadia	29



List of Illustrations

Fig. 2.2.1	Amnesty International Rally	30
Fig. 2.2.2	Opening Ceremony of World Youth Festival, Pyongyang, South Korea	31
Fig. 2.2.3	Roman Catholic Mass in the Toronto Skydome.	32
Fig. 2.2.4	Passion, Atmosphere and Connection to the event	33
Fig. 2.2.5	Oriole Baseball Park at Camden Yards.	34
Fig. 2.2.6	Olympic village in Seoul, 1988	35
Fig. 2.3.1	Hard Rock Concert in the Lenin Stadium in Moscow.	37
Fig. 2.3.2	Sydney Olympic Stadium in Sydney, Australia.	38
Fig. 2.3.3	A Power boat Show at Toronto Sky dome at Toronto, Canada.	39
Fig. 2.3.4	Gelredome Stadium Movable pitch rolled in to the stadium, before a football match	40
 University of Moratuwa, Sri Lanka Electronic Theses & Dissertations www.lib.mrt.ac.lk		
Fig. 2.3.5	Toronto Skydome as a Arena for Demolition Derby	41
Fig. 2.3.6	Toronto Skydome stages the Opera	41
Fig. 2.3.7	'De Kuip' in Rotterdam as location for wedding photos	42
Fig. 2.3.8	Toronto Skydome at Toronto, Canada.	43
Fig. 2.3.9	Kitakyuhu Media Dome	43
Fig. 3.0.1	Kitakyushu Media Dome at Fukuoka, Japan. 1996-1998	44
Fig. 3.0.2	Olympic Village in Seoul 1988	44
Fig. 3.0.3	Sense of connection with the event and a huge amount of passion	45
Fig. 3.0.4	Bank One Ballpark at Phoenix, Arizona.	

List of Illustrations

Fig. 3.1.1	1998 Soldier Field at Chicago, USA. 1918-1924 Capacity- 67,000	46 47
Fig. 3.1.2	The Wembley Stadium in London. 1922-1923. Capacity- 90,000	48
Fig. 3.1.3	Famous Twin towers at Wembley	49
Fig. 3.1.4	Olympisch Stadion in Amsterdam, Netherlands 1927-1928	50
Fig. 3.1.5	Olympiastadion in Berlin, Germany. 1933-1936	50
Fig. 3.1.6	Surrounding Physical context of the Olympiastadion	51
Fig. 3.1.7	Marathon gate and Olympic Flame Platform Olympiastadion	51
Fig.3.1.8	Internal Gallery in the Olympiastadion	52
Fig.3.1.9	Waterfront Façade of the Vienna Stadium. 1928-1931	52
Fig. 3.1.10	Olympic stadium in London. 1908	53
Fig. 3.2.1	Maracana Stadium	54
Fig. 3.2.2	Stadium San Siro	55
Fig. 3.2.3	Ramps around San Siro	56
Fig. 3.2.4	Modern San Siro after renovations in 1990 for World Cup	56
Fig. 3.2.5	Estadio Santiago Bernabue. 1944-1947	57
Fig. 3.2.6	Santiago Bernabue after renovations in 1982 for World Cup	57

List of Illustrations

Fig.3.2.7	Stadium Nou Camp. 1954	58
Fig. 3.2.8	Lenin Stadium. 1956	59
Fig. 3.2.9	Lenin Statue in front of the stadium	60
Fig. 3.3.1	The Land Mark in Japan, Olympic Halls	62
Fig. 3.3.2	Olympic arenas in Tokyo, Japan 1961-1964	63
Fig. 3.3.3	Olympic Halls in Tokyo; the Lager Hall including Fifty-meter long pool and diving pool	63
Fig. 3.3.4	Takamatsu Hall in Takamatsu, Japan. 1962	64
Fig. 3.3.5	Side Elevation of the Takamatsu Hall	64
Fig. 3.3.6	Stadio Comunale in Florence, Italy. 1930- 1932 Capacity 49,000	65
Fig. 3.3.7	Stadio Comunale; Fifty-five meter high marathon Tower	66
Fig. 3.3.8	Sculptural Main Stand, Stadio Comunale	66
Fig. 3.3.9	Palazzetto Dello Sport in Rome, Italy. 1957- 1959	67
Fig. 3.3.10	Stadio Flaminio in Rome, Italy. 1957- 1959 Capacity 55,000	67
Fig. 3.3.11	Centro JVC in Guadalajara, Mexico. Designed in 1999	68
Fig. 3.4.1	Louisiana Dome	69
Fig. 3.4.2	The Lamp Shade of the city; San Nicola in Bari, Italy	70
Fig. 3.4.3	Stadio San Nicola in Bari, Italy. 1990. Capacity 58,000	70
Fig. 3.4.4	Dodger Stadium in Los Angeles, USA. 1959- 1962. Capacity 56,000	71
Fig. 3.4.5	The Dodger Stadium in Los Angeles, USA.	



List of Illustrations

	Redesigned in 1999 for 75,000 capacity	72
Fig. 3.4.6	Main entrance to the Amsterdam Arena	73
Fig. 3.4.7	Amsterdam Arena in Amsterdam, Netherlands. 1993-1996 Capacity 51,500	73
Fig. 3.4.8	Astrodome in Houston, USA. 1961-1965 55,000	74
Fig. 3.4.9	Inside the Astrodome	74
Fig. 3.4.10	Hong Kong Coliseum, Hong Kong.	75
Fig. 3.5.1	Atletismo Stadium; Play with Nature	76
Fig. 3.5.2	Stadio de Atletismo in Madrid, Spain. 1994. Capacity 20,500	77
Fig. 3.5.3	Section of the stadium, Atletismo	77
Fig. 3.5.4	Nagano Olympic Arena in Nagano, Japan. 1998 Capacity 10,000	78
Fig. 3.5.5	Inside of the Olympic Arena in Nagano	79
Fig. 3.5.6	Sections of the stadium, Nagano	79
Fig. 3.5.7	Inside the Olympiastadion	80
Fig. 3.5.8	Olympiastadion in Munich, Germany. 1965-1972. Capacity 74,000	80
Fig. 3.5.9	Tent roof structure blend with the surrounding Mountains, Olympiastadion in Munich.	81
Fig. 3.5.10	Stadium Australia in Sydney, Australia. 1996-1999 Capacity 110,000	82
Fig. 3.5.11	Olympic games in 2000 was staged in Multi-functional	

List of Illustrations

	Sydney Stadium	82
Fig. 3.6.1	The design incorporates an old warehouse (1898), which serves as a backdrop to right field and lends the stadium a historical aura.	84
Fig. 3.6.2	Eye catching Towers of the Stadium	85
Fig. 3.6.3	Stadio Luigi Ferraris in Genoa, Italy. 1987- 1989. Capacity 44600	86
Fig. 3.6.4	Tokyo Dome in Tokyo, Japan. 1985- 1988. Capacity 55,000	86
Fig. 3.6.5	Tokyo Dome in Tokyo; 'The Big Egg'	87
Fig. 3.6.6	Stade de France in Paris, France. 1995- 1998. Capacity 80,000	88
Fig. 3.6.7	Stade de France	88
Fig. 3.6.8	Oriole Baseball Park in Camden Yards, USA. 1992. Capacity 48,000	89
Fig. 3.6.9	No big gap between Stadium and Street; Oriole Baseball Park	89
Fig. 3.6.10	Oriole Baseball Park, Focal point of the city.	90
Fig. 3.6.11	City buildings are part of the Stadium. Oriole Baseball Park	90
Fig. 3.6.12	Plan, Oriole Baseball Park.	90
Fig. 3.6.13	Oriole Baseball Park, A complete entertainment factory.	91
Fig. 3.6.14	Stadion Galgenwaard in Utrecht, Netherlands. 1977- 1982. Capacity 20,000	91
Fig. 3.6.15	Respond to the street and Surrounding Physical context;	

List of Illustrations

	Stadion Galgenwaard.	92
Fig.3.6.16	Bank One Ballpark, Phoenix. (Arizona). 1998	93
Fig. 4.0.1	Asgiriya Cricket Stadium in Kandy, Sri Lanka	94
Fig. 4.0.2	Khettarama International Cricket Stadium in Colombo, Sri Lanka	95
Fig. 4.0.3	Sugathadasa In-door Stadium in Colombo, Sri Lanka.	95
Fig. 4.0.4	The Temple of Tooth Relic in Kandy; The last link of the Sri Lankan Traditional Architecture	96
Fig. 4.1.1	Khettarama Temple Next to the Khettarama Stadium; both Social venues function separately without any interaction	97
Fig. 4.1.2	SSC Stadium and Sports complex; The hall at the upper level is used some times as a reception hall for members weddings	98
Fig. 4.1.3	SSC Stadium could be able to generate considerable income from advertising	98
Fig. 4.1.4	The Pavilion in front of the SSC Swimming Pool has become a good community space for mothers who were waiting for their daughters	98
Fig. 4.1.5	Boundary Wall of the Sugathadasa Stadium; The Social barrier between the Stadium and the General Public	99
Fig. 4.1.6	Sugathadasa In-door Stadium; has a good demand for sports practices as well as for musical concerts	99
Fig. 4.1.7	VIP Entrance of the Sugathadasa In-door Stadium; Grandness and Greatness	100
Fig. 4.1.8	The Gym in the Sugathadasa In-door Stadium; Getting in is allowed only for the Members	101
Fig. 4.2.1	VIP Entrance of the Khettarama Stadium	102

List of Illustrations

Fig. 4.2.2	Location Map of the Khetarama Stadium	102
Fig. 4.2.3	Steel fence right round the premises by making it isolated	103
Fig. 4.2.4	Active Street, one of the boundaries of the Stadium premises; but no contribution from the Stadium side street activeness	103
Fig. 4.2.5	Khetarama Stadium in Colombo, Sri Lanka. 1986 Capacity 30,000	104
Fig. 4.2.6	Valuable Urban land in the stadium premises, which could be used for development has been abandoned	104
Fig. 4.2.7	Parking space of the Stadium	105
Fig. 4.2.8	Idle space under the tiers facing to the road	105
Fig. 4.2.9	A Public entrance to the concourse at the inside the boundary fence	105
Fig. 4.2.10	Low scale residential environment around the Stadium	106
Fig. 4.2.11	Main Entrance of the Stadium	106
Fig. 4.2.12	Khetarama Stadium, play at night with Flood Light system	107
Fig. 4.3.1	Sugathadasa Out door Stadium in Colombo, Sri Lanka. 1983. Capacity 30,000	108
Fig. 4.3.2	Sugathadasa In-door Stadium and Sports Complex in Colombo, Sri Lanka. 1983. Capacity 7500	108
Fig. 4.3.3	Location of the Sugathadasa Out door Stadium	109
Fig. 4.3.4	Sugathadasa Out door Stadium. 1983. Capacity 30,000	109
Fig. 4.3.5	Sugathadasa Out door Stadium. 1983. Capacity 30,000	110
Fig. 4.3.6	Main Entrance of the in-door Stadium	110

List of Illustrations

Fig. 4.3.7	Diving Pool	111
Fig. 4.3.8	Sugathadasa In-door Stadium	111
Fig. 4.3.9	Boundary Wall of the Stadium, facing to the street	112
Fig. 4.3.10	Parking in front of the Out-door Stadium and the Physical fabric of the surrounding	112
Fig. 4.3.11	Front Façade of the Stadium	112
Fig. 4.3.12	Recently opened Commercial development in the Out-door Stadium premises. A Sign of Mix-use	113
Fig. 4.4.1	Members Parking area of the SSC stadium	114
Fig. 4.4.2	There is only about 100 parking lots in side the premises	114
Fig. 4.4.3	The restaurant over viewing the Garden	115
Fig. 4.4.4	Newly designed Bar in SSC Stadium	115
Fig. 4.4.5	Buffet in the Restaurant	116
Fig. 4.4.6	View of the ground to the Bar	116
Fig. 4.4.7	Main Entrance of the Stadium. Two separate gates for entrance and exit, like in old English house	117
Fig. 4.4.8	Children's Court. A view from the restaurant	117
Fig. 4.4.9	Passage between the Entrance Lobby to Restaurant and Ground	118
Fig. 4.4.10	Swimming Pool Complex	118
Fig. 4.4.11	SSC ground. 1899. Capacity 22,000	119
Fig. 4.4.12	Main Stands; SSC, Colombo	119
Fig. 4.5.1	Oriole Baseball Park, Camden Yards	120
Fig. 4.5.2	Khettarama Stadium, Colombo	120

List of Illustrations

Fig.4.5.3	Sugathadasa Stadium, Colombo	121
Fig.4.5.4	Stadion Galgenwaard, Netherlands	121
Fig.4.5.5	Olympiastadion, Germany	122
Fig.4.5.6	SSC Stadium, Colombo	122
Fig.4.5.7	Sugathadasa Stadium, Colombo	122



University of Moratuwa, Sri Lanka
Electronic Theses & Dissertations
www.lib.mrt.ac.lk



ABSTRACT

In the pre- historic times man led a nomadic life style and earned his food mainly by hunting. But with the development of culture and with the development of societies, he no longer had to hunt for his food. He had ample time on his hands to do whatever he wishes. Sports filled in the void created in his life by not having to hunt anymore. Though he may never has understood, sports played a major role in men successful adaptation to the lifestyle of today, from that of his pre- historic, nomadic ancestors.

So it is no surprise that sports took such an important part in the socio-cultural development of a country. Through out the human civilization parallel with the socio- cultural and economic development, sports culture too developed. With the development of the sports culture, man started to build special spaces for sport activities. So began the long and wonderful history of sports stadia. Parallel to the various development areas of human history we can identify, various stages of stadia developments too. Different types of stadia developed as a result of different socio-cultural styles and trends of different ears and nations. This co-related development continued all the way through the modern world we live.in today. The connection between the society and its sports stadia has never been so strong in the entire history of human kind.

The stadium has become so important aspect of a society, that it is gradually taking over the importance so far held by the religious buildings. In the modern day world the sports stadium is not only a place where just 'sport functions' take place it is a major source of entertainment and social interaction. The stadia all over the world has developed with the city in a way, so that even the social economic sustainability of some cities depends on their stadia.

Our stadia have failed in this aspect, because of our architecture has so far failed to grasp the potentials of a stadium. Thus failing to character for those potentials. Therefore our stadia lack the necessary encouragements in its special

Abstract

progression or in its architectural language to make them places of social interaction, so our stadia remain, just as dead spaces within the cities, with no value to the society, culturally or financially.

But there are some exceptions to be seen, where some kind of socio-cultural and mix-use functions take place. Stadia like SSC have succeeded somewhat in becoming important social, cultural and economic centers in the cities, they belong to. They have managed to do so, simply because they have acquired mix-use capacity. These stadia are not just sport stadia, but cater to various social, cultural and economic needs of the society and they are in harmony with surrounding physical and social context. So they have become very popular social centers in the cities all year around.

We must understand to look at all the success and failures of the stadia in Global phenomenon and give the unique solution needed for design problem at hand. In other words mere replica, of however successful the original may be, want be a successful solution to a design problem they have to solve. When the architects of Sri Lanka managed to achieve this goal, our stadia too will be centers of important socio-cultural and economic growth. Thus creating a sustainable bond between city and the stadia.

